

Datasheet for ABIN926717 **anti-SRSF2 antibody (C-Term)**



[Go to Product page](#)

1 Image

Overview

Quantity:	100 µL
Target:	SRSF2
Binding Specificity:	C-Term
Reactivity:	Human
Host:	Rabbit
Clonality:	Polyclonal
Conjugate:	This SRSF2 antibody is un-conjugated
Application:	Western Blotting (WB)

Product Details

Immunogen:	SFRS2 antibody was raised in rabbit using the C terminal of SFRS2 as the immunogen
Purification:	Purified

Target Details

Target:	SRSF2
Alternative Name:	SFRS2 (SRSF2 Products)
Background:	The protein encoded by this gene is a member of the serine/arginine (SR)-rich family of pre-mRNA splicing factors, which constitute part of the spliceosome. Each of these factors contains an RNA recognition motif (RRM) for binding RNA and an RS domain for binding other proteins. The RS domain is rich in serine and arginine residues and facilitates interaction between different SR splicing factors. In addition to being critical for mRNA splicing, the SR

Target Details

proteins have also been shown to be involved in mRNA export from the nucleus and in translation. Two transcript variants encoding the same protein and one non-coding transcript variant have been found for this gene. Synonyms: Polyclonal SFRS2 antibody, Anti-SFRS2 antibody, serine/arginine-rich splicing factor 2 antibody, PR264 antibody, SC-35 antibody, SC35 antibody, SFRS2A antibody, SRp30b antibody.

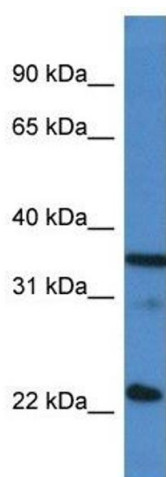
Application Details

Application Notes:	Optimal conditions should be determined by the investigator.
Comment:	SFRS2 Blocking Peptide, catalog no. 33R-4652, is also available for use as a blocking control in assays to test for specificity of this SFRS2 antibody
Restrictions:	For Research Use only

Handling

Format:	Lyophilized
Concentration:	Lot specific
Buffer:	Lyophilized powder. Add 50 μ L of distilled water. Final antibody concentration is 1 mg/mL in PBS buffer.
Handling Advice:	Avoid repeated freeze/thaw cycles.
Storage:	4 $^{\circ}$ C/-20 $^{\circ}$ C
Storage Comment:	Store at 4 $^{\circ}$ C, following reconstitution, aliquot and store at -20 $^{\circ}$ C.

Images



Western Blotting

Image 1. Western Blot showing SFRS2 antibody used at a concentration of 1 μ g/ml against HeLa Cell Lysate