

Datasheet for ABIN926729  
**anti-PPP1R2 antibody (N-Term)**



[Go to Product page](#)

1 Image

## Overview

Quantity:	100 µL
Target:	PPP1R2
Binding Specificity:	N-Term
Reactivity:	Human
Host:	Rabbit
Clonality:	Polyclonal
Conjugate:	This PPP1R2 antibody is un-conjugated
Application:	Western Blotting (WB)

## Product Details

Immunogen:	PPP1 R2 antibody was raised in rabbit using the N terminal of PPP1 2 as the immunogen
Purification:	Purified

## Target Details

Target:	PPP1R2
Alternative Name:	PPP1R2 ( <a href="#">PPP1R2 Products</a> )
Background:	PPP1R2 is an inhibitor of protein-phosphatase 1. Synonyms: Polyclonal PPP1R2 antibody, Anti-PPP1R2 antibody, protein phosphatase 1, regulatory, inhibitor subunit 2 antibody, IPP2 antibody, MGC87148 antibody.
Pathways:	<a href="#">PI3K-Akt Signaling</a> , <a href="#">Cellular Glucan Metabolic Process</a>

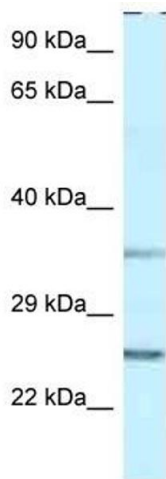
## Application Details

Application Notes:	Optimal conditions should be determined by the investigator.
Comment:	PPP1R2 Blocking Peptide, catalog no. 33R-1501, is also available for use as a blocking control in assays to test for specificity of this PPP1R2 antibody
Restrictions:	For Research Use only

## Handling

Format:	Lyophilized
Concentration:	Lot specific
Buffer:	Lyophilized powder. Add 50 $\mu$ L of distilled water. Final antibody concentration is 1 mg/mL in PBS buffer.
Handling Advice:	Avoid repeated freeze/thaw cycles.
Storage:	4 °C/-20 °C
Storage Comment:	Store at 4 °C, following reconstitution, aliquot and store at -20 °C.

## Images



### Western Blotting

**Image 1.** Western Blot showing PPP1R2 antibody used at a concentration of 1  $\mu$ g/ml against THP-1 Cell Lysate