

## Datasheet for ABIN926730 **anti-EIF6 antibody (C-Term)**



[Go to Product page](#)

### 1 Image

#### Overview

Quantity:	100 µL
Target:	EIF6
Binding Specificity:	C-Term
Reactivity:	Human
Host:	Rabbit
Clonality:	Polyclonal
Conjugate:	This EIF6 antibody is un-conjugated
Application:	Western Blotting (WB)

#### Product Details

Immunogen:	EIF6 antibody was raised in rabbit using the C terminal of EIF6 as the immunogen
Purification:	Purified

#### Target Details

Target:	EIF6
Alternative Name:	EIF6 ( <a href="#">EIF6 Products</a> )
Background:	Hemidesmosomes are structures which link the basal lamina to the intermediate filament cytoskeleton. An important functional component of hemidesmosomes is the integrin beta-4 subunit (ITGB4), a protein containing two fibronectin type III domains. The protein encoded by this gene binds to the fibronectin type III domains of ITGB4 and may help link ITGB4 to the intermediate filament cytoskeleton. The encoded protein, which is insoluble and found both in

## Target Details

---

the nucleus and in the cytoplasm, can function as a translation initiation factor and prevent the association of the 40S and 60S ribosomal subunits. Synonyms: Polyclonal EIF6 antibody, Anti-EIF6 antibody, eukaryotic translation initiation factor 6 antibody, 2 antibody, CAB antibody, EIF3A antibody, ITGB4BP antibody, b antibody, b(2)gcn antibody, gcn antibody, p27BBP antibody.

Pathways: [Ribonucleoprotein Complex Subunit Organization](#), [Ribosome Assembly](#)

## Application Details

---

Application Notes: Optimal conditions should be determined by the investigator.

Comment: EIF6 Blocking Peptide, catalog no. 33R-10387, is also available for use as a blocking control in assays to test for specificity of this EIF6 antibody

Restrictions: For Research Use only

## Handling

---

Format: Lyophilized

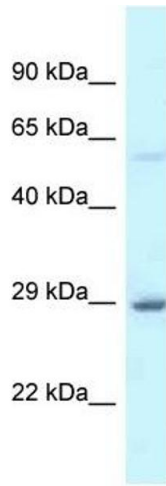
Concentration: Lot specific

Buffer: Lyophilized powder. Add 50  $\mu$ L of distilled water. Final antibody concentration is 1 mg/mL in PBS buffer.

Handling Advice: Avoid repeated freeze/thaw cycles.

Storage: 4 °C/-20 °C

Storage Comment: Store at 4 °C, following reconstitution, aliquot and store at -20 °C.



### Western Blotting

**Image 1.** Western Blot showing EIF6 antibody used at a concentration of 1 ug/ml against Fetal Liver Lysate