

Datasheet for ABIN926736  
**anti-MAGI2 antibody (N-Term)**



[Go to Product page](#)

1 Image

## Overview

Quantity:	100 µL
Target:	MAGI2
Binding Specificity:	N-Term
Reactivity:	Human
Host:	Rabbit
Clonality:	Polyclonal
Conjugate:	This MAGI2 antibody is un-conjugated
Application:	Western Blotting (WB)

## Product Details

Immunogen:	MAGI2 antibody was raised in rabbit using the N terminal of MAGI2 as the immunogen
Purification:	Purified

## Target Details

Target:	MAGI2
Alternative Name:	MAGI2 ( <a href="#">MAGI2 Products</a> )
Background:	The protein encoded by this gene interacts with atrophin-1. Atrophin-1 contains a polyglutamine repeat, expansion of which is responsible for dentatorubral and pallidoluysian atrophy. This encoded protein is characterized by two WW domains, a guanylate kinase-like domain, and multiple PDZ domains. It has structural similarity to the membrane-associated guanylate kinase homologue (MAGUK) family. Synonyms: Polyclonal MAGI2 antibody, Anti-MAGI2 antibody,

## Target Details

membrane associated guanylate kinase, WW and PDZ domain containing 2 antibody, ACVRIP1 antibody, AIP1 antibody, ARIP1 antibody, MAGI-2 antibody, SSCAM antibody.

Pathways: [Neurotrophin Signaling Pathway](#)

## Application Details

Application Notes: Optimal conditions should be determined by the investigator.

Comment: MAGI2 Blocking Peptide, catalog no. 33R-2344, is also available for use as a blocking control in assays to test for specificity of this MAGI2 antibody

Restrictions: For Research Use only

## Handling

Format: Lyophilized

Concentration: Lot specific

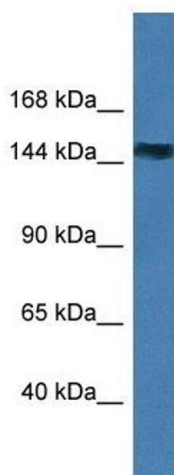
Buffer: Lyophilized powder. Add 50  $\mu$ L of distilled water. Final antibody concentration is 1 mg/mL in PBS buffer.

Handling Advice: Avoid repeated freeze/thaw cycles.

Storage: 4 °C/-20 °C

Storage Comment: Store at 4 °C, following reconstitution, aliquot and store at -20 °C.

## Images



### Western Blotting

**Image 1.** Western Blot showing MAGI2 antibody used at a concentration of 1  $\mu$ g/ml against 293T Cell Lysate