

Datasheet for ABIN926747  
**anti-PAF1/PD2 antibody (N-Term)**



[Go to Product page](#)

1 Image

## Overview

Quantity:	100 µL
Target:	PAF1/PD2 (PAF1)
Binding Specificity:	N-Term
Reactivity:	Human
Host:	Rabbit
Clonality:	Polyclonal
Conjugate:	This PAF1/PD2 antibody is un-conjugated
Application:	Western Blotting (WB)

## Product Details

Immunogen:	PAF1 antibody was raised in rabbit using the N terminal of PAF1 as the immunogen
Purification:	Purified

## Target Details

Target:	PAF1/PD2 (PAF1)
Alternative Name:	PAF1 ( <a href="#">PAF1 Products</a> )
Background:	PAF1, parafibromin, LEO1, and CTR9 form the PAF protein complex that associates with the RNA polymerase II subunit POLR2A and with a histone methyltransferase complex. The PAF complex also has a role in histone monoubiquitination. Synonyms: Polyclonal PAF1 antibody, Anti-PAF1 antibody, Paf1, RNA polymerase II associated factor, homolog, <i>S. cerevisiae</i> antibody, F23149_1 antibody, FLJ11123 antibody, PD2 antibody.

## Target Details

Pathways: [Cellular Response to Molecule of Bacterial Origin, Stem Cell Maintenance](#)

## Application Details

Application Notes: Optimal conditions should be determined by the investigator.

Comment: PAF1 Blocking Peptide, catalog no. 33R-4108, is also available for use as a blocking control in assays to test for specificity of this PAF1 antibody

Restrictions: For Research Use only

## Handling

Format: Lyophilized

Concentration: Lot specific

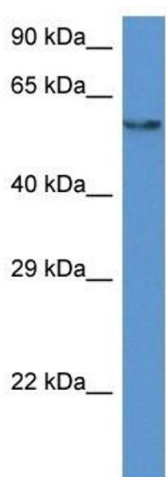
Buffer: Lyophilized powder. Add 50  $\mu$ L of distilled water. Final antibody concentration is 1 mg/mL in PBS buffer.

Handling Advice: Avoid repeated freeze/thaw cycles.

Storage: 4  $^{\circ}$ C/-20  $^{\circ}$ C

Storage Comment: Store at 4  $^{\circ}$ C, following reconstitution, aliquot and store at -20  $^{\circ}$ C.

## Images



### Western Blotting

**Image 1.** Western Blot showing PAF1 antibody used at a concentration of 1  $\mu$ g/ml against HepG2 Cell Lysate