

Datasheet for ABIN926762
anti-Lipin 2 antibody (C-Term)



[Go to Product page](#)

1 Image

Overview

Quantity:	100 µL
Target:	Lipin 2 (LPIN2)
Binding Specificity:	C-Term
Reactivity:	Human
Host:	Rabbit
Clonality:	Polyclonal
Conjugate:	This Lipin 2 antibody is un-conjugated
Application:	Western Blotting (WB)

Product Details

Immunogen:	LPIN2 antibody was raised in rabbit using the C terminal of LPIN2 as the immunogen
Purification:	Purified

Target Details

Target:	Lipin 2 (LPIN2)
Alternative Name:	LPIN2 (LPIN2 Products)
Background:	Mouse studies suggest that this gene functions during normal adipose tissue development and may play a role in human triglyceride metabolism. This gene represents a candidate gene for human lipodystrophy, characterized by loss of body fat, fatty liver, hypertriglyceridemia, and insulin resistance. Synonyms: Polyclonal LPIN2 antibody, Anti-LPIN2 antibody, lipin 2 antibody, KIAA0249 antibody.

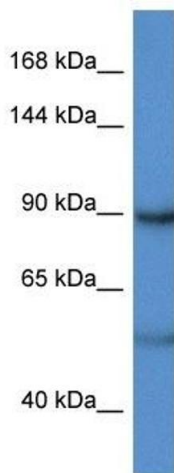
Application Details

Application Notes:	Optimal conditions should be determined by the investigator.
Comment:	LPIN2 Blocking Peptide, catalog no. 33R-2554, is also available for use as a blocking control in assays to test for specificity of this LPIN2 antibody
Restrictions:	For Research Use only

Handling

Format:	Lyophilized
Concentration:	Lot specific
Buffer:	Lyophilized powder. Add 50 μ L of distilled water. Final antibody concentration is 1 mg/mL in PBS buffer.
Handling Advice:	Avoid repeated freeze/thaw cycles.
Storage:	4 °C/-20 °C
Storage Comment:	Store at 4 °C, following reconstitution, aliquot and store at -20 °C.

Images



Western Blotting

Image 1. Western Blot showing LPIN2 antibody used at a concentration of 1 μ g/ml against Hela Cell Lysate