

## Datasheet for ABIN926770 **anti-BAT3 antibody (C-Term)**



[Go to Product page](#)

### 1 Image

#### Overview

Quantity:	100 µL
Target:	BAT3
Binding Specificity:	C-Term
Reactivity:	Human
Host:	Rabbit
Clonality:	Polyclonal
Conjugate:	This BAT3 antibody is un-conjugated
Application:	Western Blotting (WB)

#### Product Details

Immunogen:	BAG6 antibody was raised in rabbit using the C terminal of BAG6 as the immunogen
Purification:	Purified

#### Target Details

Target:	BAT3
Alternative Name:	<a href="#">BAG6 (BAT3 Products)</a>
Background:	This gene was first characterized as part of a cluster of genes located within the human major histocompatibility complex class III region. This gene encodes a nuclear protein that is cleaved by caspase 3 and is implicated in the control of apoptosis. In addition, the protein forms a complex with E1A binding protein p300 and is required for the acetylation of p53 in response to DNA damage. Synonyms: Polyclonal BAG6 antibody, Anti-BAG6 antibody, BCL2-associated

## Target Details

athanogene 6 antibody, BAG-6 antibody, BAG6 antibody, D6S52E antibody, G3 antibody.

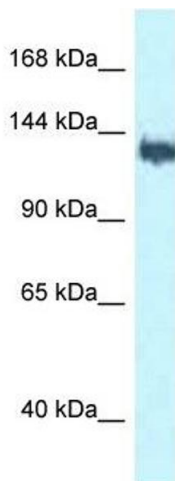
## Application Details

Application Notes:	Optimal conditions should be determined by the investigator.
Comment:	BAG6 Blocking Peptide, catalog no. 33R-1488, is also available for use as a blocking control in assays to test for specificity of this BAG6 antibody
Restrictions:	For Research Use only

## Handling

Format:	Lyophilized
Concentration:	Lot specific
Buffer:	Lyophilized powder. Add 50 $\mu$ L of distilled water. Final antibody concentration is 1 mg/mL in PBS buffer.
Handling Advice:	Avoid repeated freeze/thaw cycles.
Storage:	4 °C/-20 °C
Storage Comment:	Store at 4 °C, following reconstitution, aliquot and store at -20 °C.

## Images



### Western Blotting

**Image 1.** Western Blot showing BAG6 antibody used at a concentration of 1 ug/ml against MCF7 Cell Lysate