

Datasheet for ABIN926776  
**anti-RPL14 antibody (C-Term)**



[Go to Product page](#)

1 Image

## Overview

Quantity:	100 µL
Target:	RPL14
Binding Specificity:	C-Term
Reactivity:	Human
Host:	Rabbit
Clonality:	Polyclonal
Conjugate:	This RPL14 antibody is un-conjugated
Application:	Western Blotting (WB)

## Product Details

Immunogen:	RPL14 antibody was raised in rabbit using the C terminal of RPL14 as the immunogen
Purification:	Purified

## Target Details

Target:	RPL14
Alternative Name:	RPL14 ( <a href="#">RPL14 Products</a> )
Background:	Ribosomes, the organelles that catalyze protein synthesis, consist of a small 40S subunit and a large 60S subunit. Together these subunits are composed of 4 RNA species and approximately 80 structurally distinct proteins. This gene encodes a ribosomal protein that is a component of the 60S subunit. The protein belongs to the L14E family of ribosomal proteins. It contains a basic region-leucine zipper (bZIP)-like domain. The protein is located in the cytoplasm. This

## Target Details

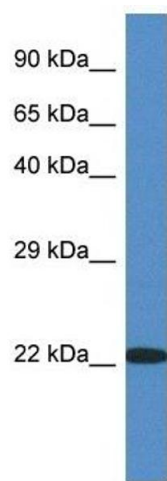
gene contains a trinucleotide (GCT) repeat tract whose length is highly polymorphic, these triplet repeats result in a stretch of alanine residues in the encoded protein. Transcript variants utilizing alternative polyA signals and alternative 5'-terminal exons exist but all encode the same protein. As is typical for genes encoding ribosomal proteins, there are multiple processed pseudogenes of this gene dispersed through the genome. Synonyms: Polyclonal RPL14 antibody, Anti-RPL14 antibody, ribosomal protein L14 antibody, CAG-ISL-7 antibody, CTG-B33 antibody, L14 antibody, MGC88594 antibody, RL14 antibody, hRL14 antibody.

## Application Details

Application Notes:	Optimal conditions should be determined by the investigator.
Comment:	RPL14 Blocking Peptide, catalog no. 33R-4445, is also available for use as a blocking control in assays to test for specificity of this RPL14 antibody
Restrictions:	For Research Use only

## Handling

Format:	Lyophilized
Concentration:	Lot specific
Buffer:	Lyophilized powder. Add 50 µL of distilled water. Final antibody concentration is 1 mg/mL in PBS buffer.
Handling Advice:	Avoid repeated freeze/thaw cycles.
Storage:	4 °C/-20 °C
Storage Comment:	Store at 4 °C, following reconstitution, aliquot and store at -20 °C.



Western Blotting

**Image 1.** Western Blot showing RPL14 antibody used at a concentration of 1 ug/ml against Fetal Kidney Lysate