

Datasheet for ABIN926779

anti-COMMD1 antibody (C-Term)[Go to Product page](#)**1** Image

Overview

Quantity:	100 µL
Target:	COMMD1
Binding Specificity:	C-Term
Reactivity:	Human
Host:	Rabbit
Clonality:	Polyclonal
Conjugate:	This COMMD1 antibody is un-conjugated
Application:	Western Blotting (WB)

Product Details

Immunogen:	COMMD1 antibody was raised in rabbit using the C terminal of COMMD1 as the immunogen
Purification:	Purified

Target Details

Target:	COMMD1
Alternative Name:	COMMD1 (COMMD1 Products)
Background:	COMMD1 is a regulator of copper homeostasis, sodium uptake, and NF-kappa-B signaling. Synonyms: Polyclonal COMMD1 antibody, Anti-COMMD1 antibody, copper metabolism, Murr1 domain containing 1 antibody, C2orf5 antibody, MGC27155 antibody, MURR1 antibody.
Pathways:	Transition Metal Ion Homeostasis

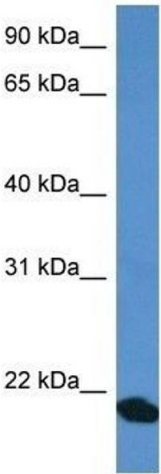
Application Details

Application Notes:	Optimal conditions should be determined by the investigator.
Comment:	COMMD1 Blocking Peptide, catalog no. 33R-6261, is also available for use as a blocking control in assays to test for specificity of this COMMD1 antibody
Restrictions:	For Research Use only

Handling

Format:	Lyophilized
Concentration:	Lot specific
Buffer:	Lyophilized powder. Add 50 µL of distilled water. Final antibody concentration is 1 mg/mL in PBS buffer.
Handling Advice:	Avoid repeated freeze/thaw cycles.
Storage:	4 °C/-20 °C
Storage Comment:	Store at 4 °C, following reconstitution, aliquot and store at -20 °C.

Images



Western Blotting

Image 1. Western Blot showing COMMD1 antibody used at a concentration of 1 ug/ml against Fetal Heart Lysate