

Datasheet for ABIN926780
anti-LIPH antibody (C-Term)



[Go to Product page](#)

1 Image

Overview

Quantity:	100 µL
Target:	LIPH
Binding Specificity:	C-Term
Reactivity:	Human
Host:	Rabbit
Clonality:	Polyclonal
Conjugate:	This LIPH antibody is un-conjugated
Application:	Western Blotting (WB)

Product Details

Immunogen:	LIPH antibody was raised in rabbit using the C terminal of LIPH as the immunogen
Purification:	Purified

Target Details

Target:	LIPH
Alternative Name:	LIPH (LIPH Products)
Background:	This gene encodes a membrane-bound member of the mammalian triglyceride lipase family. It catalyzes the production of 2-acyl lysophosphatidic acid (LPA), which is a lipid mediator with diverse biological properties that include platelet aggregation, smooth muscle contraction, and stimulation of cell proliferation and motility. Synonyms: Polyclonal LIPH antibody, Anti-LIPH antibody, lipase, member H antibody, AH antibody, LPDLR antibody, PLA1B antibody, mPA-PLA1

Target Details

antibody.

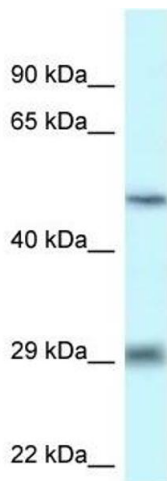
Application Details

Application Notes:	Optimal conditions should be determined by the investigator.
Comment:	LIPH Blocking Peptide, catalog no. 33R-10361, is also available for use as a blocking control in assays to test for specificity of this LIPH antibody
Restrictions:	For Research Use only

Handling

Format:	Lyophilized
Concentration:	Lot specific
Buffer:	Lyophilized powder. Add 50 μ L of distilled water. Final antibody concentration is 1 mg/mL in PBS buffer.
Handling Advice:	Avoid repeated freeze/thaw cycles.
Storage:	4 °C/-20 °C
Storage Comment:	Store at 4 °C, following reconstitution, aliquot and store at -20 °C.

Images



Western Blotting

Image 1. Western Blot showing LIPH antibody used at a concentration of 1 μ g/ml against THP-1 Cell Lysate