

Datasheet for ABIN926794
anti-RPS9 antibody (N-Term)



[Go to Product page](#)

1 Image

Overview

Quantity:	100 µL
Target:	RPS9
Binding Specificity:	N-Term
Reactivity:	Human
Host:	Rabbit
Clonality:	Polyclonal
Conjugate:	This RPS9 antibody is un-conjugated
Application:	Western Blotting (WB)

Product Details

Immunogen:	RPS9 antibody was raised in rabbit using the N terminal of RPS9 as the immunogen
Purification:	Purified

Target Details

Target:	RPS9
Alternative Name:	RPS9 (RPS9 Products)
Background:	Ribosomes, the organelles that catalyze protein synthesis, consist of a small 40S subunit and a large 60S subunit. Together these subunits are composed of 4 RNA species and approximately 80 structurally distinct proteins. This gene encodes a ribosomal protein that is a component of the 40S subunit. The protein belongs to the S4P family of ribosomal proteins. It is located in the cytoplasm. Variable expression of this gene in colorectal cancers compared to adjacent normal

Target Details

tissues has been observed, although no correlation between the level of expression and the severity of the disease has been found. As is typical for genes encoding ribosomal proteins, multiple processed pseudogenes derived from this gene are dispersed through the genome. Synonyms: Polyclonal RPS9 antibody, Anti-RPS9 antibody, ribosomal protein S9 antibody.

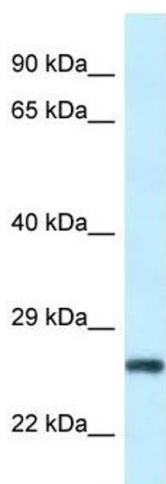
Application Details

Application Notes:	Optimal conditions should be determined by the investigator.
Comment:	RPS9 Blocking Peptide, catalog no. 33R-7894, is also available for use as a blocking control in assays to test for specificity of this RPS9 antibody
Restrictions:	For Research Use only

Handling

Format:	Lyophilized
Concentration:	Lot specific
Buffer:	Lyophilized powder. Add 50 μ L of distilled water. Final antibody concentration is 1 mg/mL in PBS buffer.
Handling Advice:	Avoid repeated freeze/thaw cycles.
Storage:	4 °C/-20 °C
Storage Comment:	Store at 4 °C, following reconstitution, aliquot and store at -20 °C.

Images



Western Blotting

Image 1. Western Blot showing RPS9 antibody used at a concentration of 1 μ g/ml against Hela Cell Lysate