

Datasheet for ABIN926795
anti-STOML2 antibody (C-Term)



[Go to Product page](#)

1 Image

Overview

Quantity:	100 µL
Target:	STOML2
Binding Specificity:	C-Term
Reactivity:	Human
Host:	Rabbit
Clonality:	Polyclonal
Conjugate:	This STOML2 antibody is un-conjugated
Application:	Western Blotting (WB)

Product Details

Immunogen:	STOML2 antibody was raised in rabbit using the C terminal of STOML2 as the immunogen
Purification:	Purified

Target Details

Target:	STOML2
Alternative Name:	STOML2 (STOML2 Products)
Background:	The function of this protein remains unknown. Synonyms: Polyclonal STOML2 antibody, Anti-STOML2 antibody, stomatin, EPB72-like 2 antibody, HSPC108 antibody, SLP-2 antibody.
Pathways:	SARS-CoV-2 Protein Interactome , The Global Phosphorylation Landscape of SARS-CoV-2 Infection

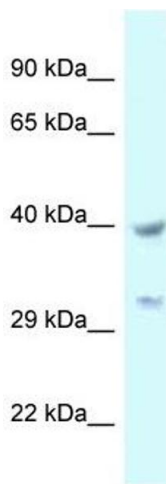
Application Details

Application Notes:	Optimal conditions should be determined by the investigator.
Comment:	STOML2 Blocking Peptide, catalog no. 33R-9858, is also available for use as a blocking control in assays to test for specificity of this STOML2 antibody
Restrictions:	For Research Use only

Handling

Format:	Lyophilized
Concentration:	Lot specific
Buffer:	Lyophilized powder. Add 50 μ L of distilled water. Final antibody concentration is 1 mg/mL in PBS buffer.
Handling Advice:	Avoid repeated freeze/thaw cycles.
Storage:	4 °C/-20 °C
Storage Comment:	Store at 4 °C, following reconstitution, aliquot and store at -20 °C.

Images



Western Blotting

Image 1. Western Blot showing STOML2 antibody used at a concentration of 1 μ g/ml against 721_B Cell Lysate