

Datasheet for ABIN926849  
**anti-NME1 antibody (N-Term)**



[Go to Product page](#)

3 Images

## Overview

Quantity:	100 µL
Target:	NME1
Binding Specificity:	N-Term
Reactivity:	Human, Mouse, Rat, Dog, Pig, Cow, Chicken, Xenopus laevis, Zebrafish (Danio rerio)
Host:	Rabbit
Clonality:	Polyclonal
Conjugate:	This NME1 antibody is un-conjugated
Application:	Western Blotting (WB)

## Product Details

Immunogen:	NME1 antibody was raised in rabbit using the N terminal of NME1 as the immunogen
Cross-Reactivity:	Mouse (Murine), Rat (Rattus), Dog (Canine), Cow (Bovine), Zebrafish (Brachydanio rerio), Chicken, Pig (Porcine), Frog
Purification:	Purified

## Target Details

Target:	NME1
Alternative Name:	NME1 ( <a href="#">NME1 Products</a> )
Background:	This gene (NME1) was identified because of its reduced mRNA transcript levels in highly metastatic cells. Nucleoside diphosphate kinase (NDK) exists as a hexamer composed of 'A' (encoded by this gene) and 'B' (encoded by NME2) isoforms. Mutations in this gene have been

## Target Details

---

identified in aggressive neuroblastomas. Two transcript variants encoding different isoforms have been found for this gene. Co-transcription of this gene and the neighboring downstream gene (NME2) generates naturally-occurring transcripts (NME1-NME2), which encodes a fusion protein comprised of sequence sharing identity with each individual gene product. Synonyms: Polyclonal NME1 antibody, Anti-NME1 antibody, non-metastatic cells 1, protein, NM23A expressed in antibody, AWD antibody, GAAD antibody, NDPKA antibody, NM23 antibody, NM23-H1 antibody.

Pathways: [Apoptosis](#), [Nucleotide Phosphorylation](#), [Carbohydrate Homeostasis](#), [Ribonucleoside Biosynthetic Process](#)

## Application Details

---

Application Notes: Optimal conditions should be determined by the investigator.

Comment: NME1 Blocking Peptide, catalog no. 33R-1394, is also available for use as a blocking control in assays to test for specificity of this NME1 antibody

Restrictions: For Research Use only

## Handling

---

Format: Lyophilized

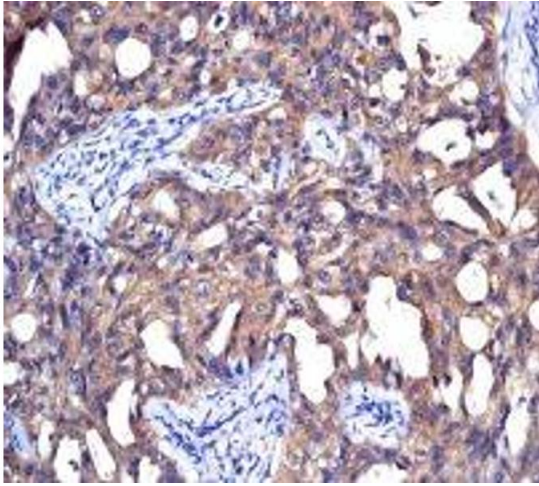
Concentration: Lot specific

Buffer: Lyophilized powder. Add 50  $\mu$ L of distilled water. Final antibody concentration is 1 mg/mL in PBS buffer.

Handling Advice: Avoid repeated freeze/thaw cycles.

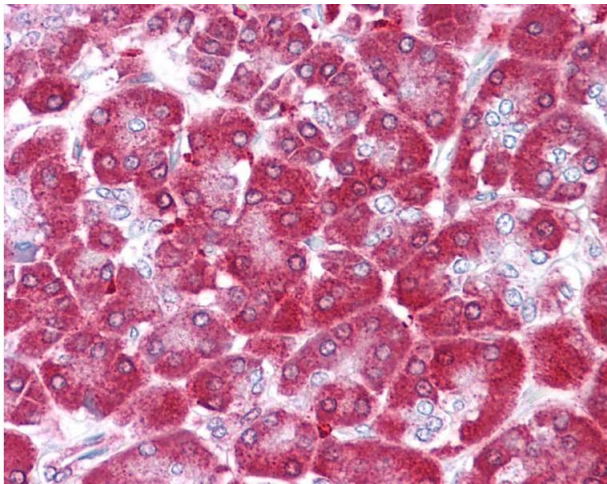
Storage: 4 °C/-20 °C

Storage Comment: Store at 4 °C, following reconstitution, aliquot and store at -20 °C.



#### Immunohistochemistry

**Image 1.** NME1 antibody was used for immunohistochemistry at a concentration of 4-8 ug/ml. Magnification is at 400X



#### Immunohistochemistry

**Image 2.** NME1 antibody was used for immunohistochemistry at a concentration of 4-8 ug/ml. Magnification is at 400X



#### Western Blotting

**Image 3.** Western Blot showing NME1 antibody used at a concentration of 1 ug/ml against Fetal Heart Lysate