

Datasheet for ABIN926854
anti-Exportin 2 antibody (N-Term)



[Go to Product page](#)

1 Image

Overview

Quantity:	100 µL
Target:	Exportin 2 (CSE1L)
Binding Specificity:	N-Term
Reactivity:	Human, Mouse, Rat, Cow, Chicken, Zebrafish (Danio rerio), Xenopus laevis
Host:	Rabbit
Clonality:	Polyclonal
Conjugate:	This Exportin 2 antibody is un-conjugated
Application:	Western Blotting (WB)

Product Details

Immunogen:	CSE1 L antibody was raised in rabbit using the N terminal of CSE1 as the immunogen
Cross-Reactivity:	Mouse (Murine), Rat (Rattus), Zebrafish (Brachydanio rerio), Cow (Bovine), Frog, Chicken
Purification:	Purified

Target Details

Target:	Exportin 2 (CSE1L)
Alternative Name:	CSE1L (CSE1L Products)
Background:	Proteins that carry a nuclear localization signal (NLS) are transported into the nucleus by the importin-alpha/beta heterodimer. Importin-alpha binds the NLS, while importin-beta mediates translocation through the nuclear pore complex. After translocation, RanGTP binds importin-beta and displaces importin-alpha. Importin-alpha must then be returned to the cytoplasm,

Target Details

leaving the NLS protein behind. CSE1L binds strongly to NLS-free importin-alpha, and this binding is released in the cytoplasm by the combined action of RANBP1 and RANGAP1. In addition, the protein may play a role both in apoptosis and in cell proliferation. Synonyms: Polyclonal CSE1L antibody, Anti-CSE1L antibody, CSE1 chromosome segregation 1-like, yeast antibody, CAS antibody, CSE1 antibody, MGC117283 antibody, MGC130036 antibody, MGC130037 antibody, XPO2 antibody.

Pathways: [Protein targeting to Nucleus](#)

Application Details

Application Notes: WB: 0.2-1 µg/mL
Optimal conditions should be determined by the investigator.

Comment: CSE1L Blocking Peptide, catalog no. 33R-2571, is also available for use as a blocking control in assays to test for specificity of this CSE1L antibody

Restrictions: For Research Use only

Handling

Format: Lyophilized

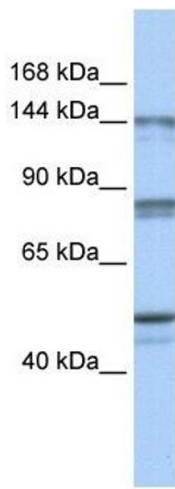
Concentration: Lot specific

Buffer: Lyophilized powder. Add 50 µL of distilled water. Final antibody concentration is 1 mg/mL in PBS buffer.

Handling Advice: Avoid repeated freeze/thaw cycles.

Storage: 4 °C/-20 °C

Storage Comment: Store at 4 °C, following reconstitution, aliquot and store at -20 °C.



Western Blotting

Image 1. CSE1L antibody (70R-10430) used at 0.2-1 ug/ml to detect target protein.