

## Datasheet for ABIN926856 **anti-PLAGL1 antibody (N-Term)**



[Go to Product page](#)

### 1 Image

#### Overview

Quantity:	100 µL
Target:	PLAGL1
Binding Specificity:	N-Term
Reactivity:	Human, Mouse, Dog, Rat, Cow, Pig
Host:	Rabbit
Clonality:	Polyclonal
Conjugate:	This PLAGL1 antibody is un-conjugated
Application:	Western Blotting (WB)

#### Product Details

Immunogen:	PLAGL1 antibody was raised in rabbit using the N terminal of PLAGL1 as the immunogen
Cross-Reactivity:	Rat (Rattus), Mouse (Murine), Cow (Bovine), Pig (Porcine), Dog (Canine)
Purification:	Purified

#### Target Details

Target:	PLAGL1
Alternative Name:	PLAGL1 ( <a href="#">PLAGL1 Products</a> )
Background:	PLAGL1 is a C2H2 zinc finger protein with transactivation and DNA-binding activity. This gene has been shown to exhibit antiproliferative activities and is a tumor suppressor gene candidate. This gene encodes a C2H2 zinc finger protein with transactivation and DNA-binding activity. This gene has been shown to exhibit antiproliferative activities and is a tumor

## Target Details

suppressor gene candidate. Two transcript variants encoding different isoforms have been found for this gene. Synonyms: Polyclonal PLAGL1 antibody, Anti-PLAGL1 antibody, pleiomorphic adenoma gene-like 1 antibody, DKFZp781P1017 antibody, LOT1 antibody, MGC126275 antibody, MGC126276 antibody, ZAC antibody, ZAC1 antibody.

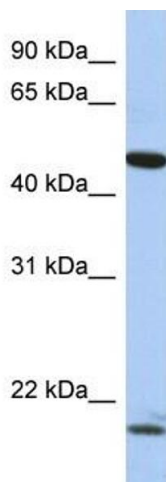
## Application Details

Application Notes:	WB: 0.2-1 µg/mL Optimal conditions should be determined by the investigator.
Comment:	PLAGL1 Blocking Peptide, catalog no. 33R-3009, is also available for use as a blocking control in assays to test for specificity of this PLAGL1 antibody
Restrictions:	For Research Use only

## Handling

Format:	Lyophilized
Concentration:	Lot specific
Buffer:	Lyophilized powder. Add 50 µL of distilled water. Final antibody concentration is 1 mg/mL in PBS buffer.
Handling Advice:	Avoid repeated freeze/thaw cycles.
Storage:	4 °C/-20 °C
Storage Comment:	Store at 4 °C, following reconstitution, aliquot and store at -20 °C.

## Images



### Western Blotting

**Image 1.** Western Blot showing PLAGL1 antibody used at a concentration of 1-2 µg/ml to detect its target protein.