

Datasheet for ABIN926881
anti-WDR3 antibody (Middle Region)



[Go to Product page](#)

1 Image

Overview

| | |
|----------------------|---|
| Quantity: | 100 µL |
| Target: | WDR3 |
| Binding Specificity: | Middle Region |
| Reactivity: | Human, Rat, Zebrafish (Danio rerio), Cow, Chicken, Xenopus laevis |
| Host: | Rabbit |
| Clonality: | Polyclonal |
| Conjugate: | This WDR3 antibody is un-conjugated |
| Application: | Western Blotting (WB) |

Product Details

| | |
|-------------------|---|
| Immunogen: | WDR3 antibody was raised in rabbit using the middle region of WDR3 as the immunogen |
| Cross-Reactivity: | Rat (Rattus), Cow (Bovine), Frog, Chicken, Zebrafish (Brachydanio rerio) |
| Purification: | Purified |

Target Details

| | |
|-------------------|---|
| Target: | WDR3 |
| Alternative Name: | WDR3 (WDR3 Products) |
| Background: | WDR3 is a nuclear protein containing 10 WD repeats. WD repeats are approximately 30- to 40- amino acid domains containing several conserved residues, which usually include a trp-asn at the C-terminal end. Proteins belonging to the WD repeat family are involved in a variety of cellular processes, including cell cycle progression, signal transduction, apoptosis, and gene |

Target Details

regulation. Synonyms: Polyclonal WDR3 antibody, Anti-WDR3 antibody, WD repeat domain 3 antibody, FLJ12796 antibody.

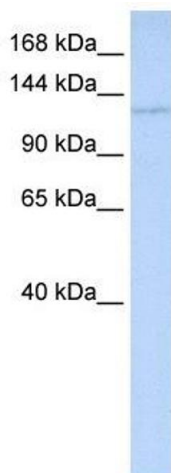
Application Details

| | |
|--------------------|--|
| Application Notes: | WB: 0.2-1 µg/mL Optimal conditions should be determined by the investigator. |
| Comment: | WDR3 Blocking Peptide, catalog no. 33R-9595, is also available for use as a blocking control in assays to test for specificity of this WDR3 antibody |
| Restrictions: | For Research Use only |

Handling

| | |
|------------------|--|
| Format: | Lyophilized |
| Concentration: | Lot specific |
| Buffer: | Lyophilized powder. Add 50 µL of distilled water. Final antibody concentration is 1 mg/mL in PBS buffer. |
| Handling Advice: | Avoid repeated freeze/thaw cycles. |
| Storage: | 4 °C/-20 °C |
| Storage Comment: | Store at 4 °C, following reconstitution, aliquot and store at -20 °C. |

Images



Western Blotting

Image 1. WDR3 antibody (70R-10457) used at 0.0758 ug/ml to detect target protein.