

Datasheet for ABIN926885  
**anti-YWHAE antibody (Middle Region)**



[Go to Product page](#)

1 Image

## Overview

Quantity:	100 µL
Target:	YWHAE
Binding Specificity:	Middle Region
Reactivity:	Human, Mouse, Rat, Zebrafish (Danio rerio), Cow, Chicken, Dog, Xenopus laevis
Host:	Rabbit
Clonality:	Polyclonal
Conjugate:	This YWHAE antibody is un-conjugated
Application:	Western Blotting (WB)

## Product Details

Immunogen:	YWHAE antibody was raised in rabbit using the middle region of YWHAE as the immunogen
Cross-Reactivity:	Mouse (Murine), Rat (Rattus), Zebrafish (Brachydanio rerio), Chicken, Cow (Bovine), Dog (Canine), Frog
Purification:	Purified

## Target Details

Target:	YWHAE
Alternative Name:	YWHAE ( <a href="#">YWHAE Products</a> )
Background:	YWHAE is an adapter protein implicated in the regulation of a large spectrum of both general and specialized signaling pathway. YWHAE binds to a large number of partners, usually by recognition of a phosphoserine or phosphothreonine motif. The binding generally results in the

## Target Details

---

modulation of the activity of the binding partner. Synonyms: Polyclonal YWHAE antibody, Anti-YWHAE antibody, tyrosine 3-monooxygenase/tryptophan 5-monooxygenase activation protein, epsilon polypeptide antibody, 14-3-3E antibody, FLJ45465 antibody, KCIP-1 antibody, MDCR antibody, MDS antibody.

Pathways: [Neurotrophin Signaling Pathway](#), [Myometrial Relaxation and Contraction](#), [M Phase](#)

## Application Details

---

Application Notes: WB: 0.2-1 µg/mL  
Optimal conditions should be determined by the investigator.

Comment: YWHAE Blocking Peptide, catalog no. 33R-2536, is also available for use as a blocking control in assays to test for specificity of this YWHAE antibody

Restrictions: For Research Use only

## Handling

---

Format: Lyophilized

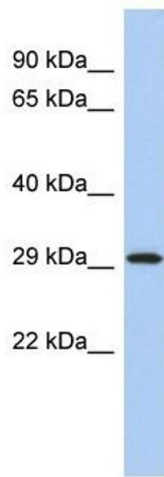
Concentration: Lot specific

Buffer: Lyophilized powder. Add 50 µL of distilled water. Final antibody concentration is 1 mg/mL in PBS buffer.

Handling Advice: Avoid repeated freeze/thaw cycles.

Storage: 4 °C/-20 °C

Storage Comment: Store at 4 °C, following reconstitution, aliquot and store at -20 °C.



### Western Blotting

**Image 1.** YWHAE antibody (70R-10461) used at 0.2-1 ug/ml to detect target protein.