

Datasheet for ABIN926886
anti-14-3-3 eta antibody (N-Term)



[Go to Product page](#)

2 Images

Overview

Quantity:	100 µL
Target:	14-3-3 eta (YWHAH)
Binding Specificity:	N-Term
Reactivity:	Human, Mouse, Rat, Cow, Rabbit, Chicken, Xenopus laevis
Host:	Rabbit
Clonality:	Polyclonal
Conjugate:	This 14-3-3 eta antibody is un-conjugated
Application:	Western Blotting (WB), Immunohistochemistry (IHC)

Product Details

Immunogen:	YWHAH antibody was raised in rabbit using the N terminal of YWHAH as the immunogen
Cross-Reactivity:	Mouse (Murine), Rat (Rattus), Chicken, Cow (Bovine), Rabbit, Frog
Purification:	Purified

Target Details

Target:	14-3-3 eta (YWHAH)
Alternative Name:	YWHAH (YWHAH Products)
Background:	The YWHAH gene product belongs to the 14-3-3 family of proteins which mediate signal transduction by binding to phosphoserine-containing proteins. This highly conserved protein family is found in both plants and mammals, and this protein is 99% identical to the mouse, rat and bovine orthologs. This gene contains a 7 bp repeat sequence in its 5' UTR, and changes in

Target Details

the number of this repeat has been associated with early-onset schizophrenia. Synonyms: Polyclonal YWHAH antibody, Anti-YWHAH antibody, tyrosine 3-monooxygenase/tryptophan 5-monooxygenase activation protein, eta polypeptide antibody, YWHA1 antibody.

Pathways: [Intracellular Steroid Hormone Receptor Signaling Pathway](#), [C21-Steroid Hormone Metabolic Process](#), [Myometrial Relaxation and Contraction](#)

Application Details

Application Notes: WB: 0.2-1 µg/mL
Optimal conditions should be determined by the investigator.

Comment: YWHAH Blocking Peptide, catalog no. 33R-1091, is also available for use as a blocking control in assays to test for specificity of this YWHAH antibody

Restrictions: For Research Use only

Handling

Format: Lyophilized

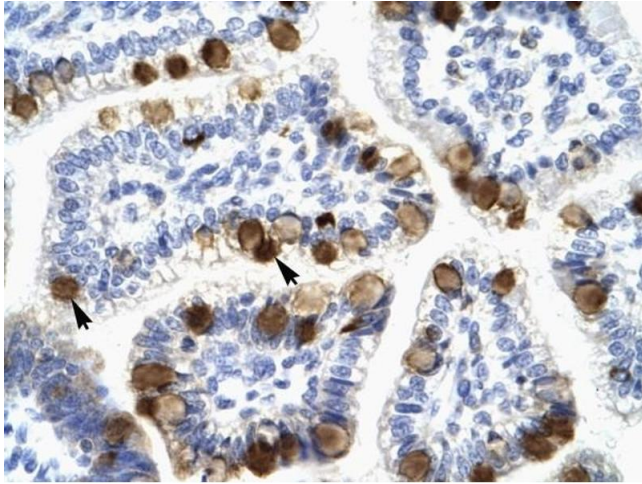
Concentration: Lot specific

Buffer: Lyophilized powder. Add 50 µL of distilled water. Final antibody concentration is 1 mg/mL in PBS buffer.

Handling Advice: Avoid repeated freeze/thaw cycles.

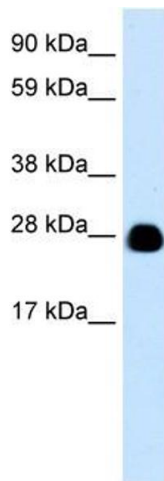
Storage: 4 °C/-20 °C

Storage Comment: Store at 4 °C, following reconstitution, aliquot and store at -20 °C.



Immunohistochemistry

Image 1. YWHAH antibody was used for immunohistochemistry at a concentration of 4-8 ug/ml to stain Epithelial cells of intestinal villus (arrows) in Human Intestine. Magnification is at 400X.



Western Blotting

Image 2. YWHAH antibody (70R-10462) used at 0.2-1 ug/ml to detect target protein.