

Datasheet for ABIN926887

**anti-14-3-3 theta antibody (N-Term)****2** Images[Go to Product page](#)

## Overview

Quantity:	100 µL
Target:	14-3-3 theta (YWHAQ)
Binding Specificity:	N-Term
Reactivity:	Human, Mouse, Rat, Cow, Dog, Chicken, Rabbit, Xenopus laevis, Zebrafish (Danio rerio)
Host:	Rabbit
Clonality:	Polyclonal
Conjugate:	This 14-3-3 theta antibody is un-conjugated
Application:	Western Blotting (WB), Immunohistochemistry (IHC)

## Product Details

Immunogen:	YWHAQ antibody was raised in rabbit using the N terminal of YWHAQ as the immunogen
Cross-Reactivity:	Mouse (Murine), Rat (Rattus), Dog (Canine), Rabbit, Frog, Cow (Bovine), Chicken, Zebrafish (Brachydanio rerio)
Purification:	Purified

## Target Details

Target:	14-3-3 theta (YWHAQ)
Alternative Name:	YWHAQ ( <a href="#">YWHAQ Products</a> )
Background:	YWHAQ belongs to the 14-3-3 family of proteins which mediate signal transduction by binding to phosphoserine-containing proteins. This highly conserved protein family is found in both plants and mammals, and this protein is 99% identical to the mouse and rat orthologs. This

## Target Details

---

gene is upregulated in patients with amyotrophic lateral sclerosis. This gene product belongs to the 14-3-3 family of proteins which mediate signal transduction by binding to phosphoserine-containing proteins. This highly conserved protein family is found in both plants and mammals, and this protein is 99% identical to the mouse and rat orthologs. This gene is upregulated in patients with amyotrophic lateral sclerosis. It contains in its 5' UTR a 6 bp tandem repeat sequence which is polymorphic, however, there is no correlation between the repeat number and the disease. Synonyms: Polyclonal YWHAQ antibody, Anti-YWHAQ antibody, tyrosine 3-monooxygenase/tryptophan 5-monooxygenase activation protein, theta polypeptide antibody, 1C5 antibody, HS1 antibody.

Pathways: [Apoptosis](#), [Myometrial Relaxation and Contraction](#)

## Application Details

---

Application Notes: WB: 0.2-1 µg/mL  
Optimal conditions should be determined by the investigator.

Comment: YWHAQ Blocking Peptide, catalog no. 33R-8902, is also available for use as a blocking control in assays to test for specificity of this YWHAQ antibody

Restrictions: For Research Use only

## Handling

---

Format: Lyophilized

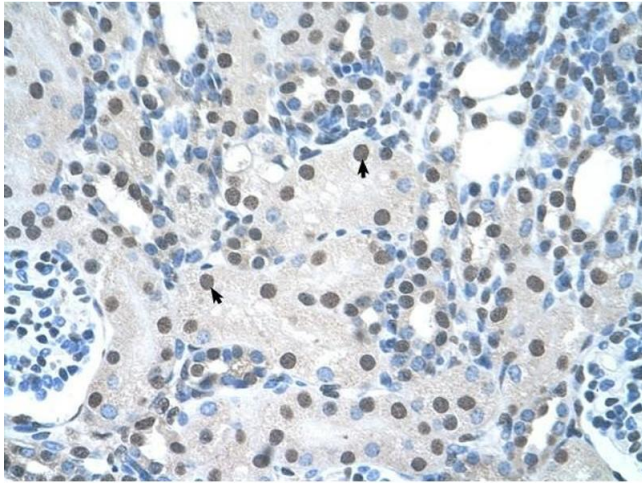
Concentration: Lot specific

Buffer: Lyophilized powder. Add 50 µL of distilled water. Final antibody concentration is 1 mg/mL in PBS buffer.

Handling Advice: Avoid repeated freeze/thaw cycles.

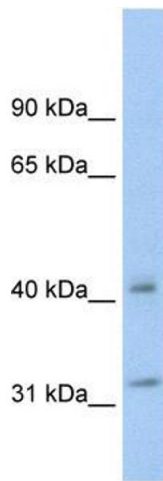
Storage: 4 °C/-20 °C

Storage Comment: Store at 4 °C, following reconstitution, aliquot and store at -20 °C.



### Immunohistochemistry

**Image 1.** YWHAQ antibody was used for immunohistochemistry at a concentration of 4-8 ug/ml to stain Epithelial cells of renal tubule (arrows) in Human Kidney. Magnification is at 400X.



### Western Blotting

**Image 2.** YWHAQ antibody (70R-10463) used at 0.2-1 ug/ml to detect target protein.