

Datasheet for ABIN926908
anti-CDC25B antibody (N-Term)



[Go to Product page](#)

2 Images

Overview

Quantity:	100 µL
Target:	CDC25B
Binding Specificity:	N-Term
Reactivity:	Human, Dog, Pig
Host:	Rabbit
Clonality:	Polyclonal
Conjugate:	This CDC25B antibody is un-conjugated
Application:	Western Blotting (WB), Immunohistochemistry (IHC)

Product Details

Immunogen:	CDC25 B antibody was raised in rabbit using the N terminal of CDC25 as the immunogen
Cross-Reactivity:	Pig (Porcine), Dog (Canine)
Purification:	Purified

Target Details

Target:	CDC25B
Alternative Name:	CDC25B (CDC25B Products)
Background:	CDC25B is a member of the CDC25 family of phosphatases. CDC25B activates the cyclin dependent kinase CDC2 by removing two phosphate groups and it is required for entry into mitosis. CDC25B shuttles between the nucleus and the cytoplasm due to nuclear localization and nuclear export signals. The protein is nuclear in the M and G1 phases of the cell cycle and

Target Details

moves to the cytoplasm during S and G2. CDC25B has oncogenic properties, although its role in tumor formation has not been determined. Synonyms: Polyclonal CDC25B antibody, Anti-CDC25B antibody, cell division cycle 25 homolog B, S. pombe antibody.

Pathways: [Cell Division Cycle](#), [M Phase](#), [Autophagy](#)

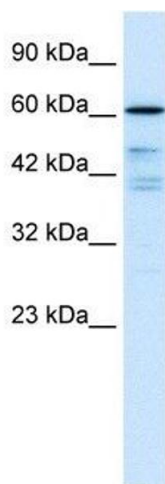
Application Details

Application Notes:	WB: 0.2-1 µg/mL Optimal conditions should be determined by the investigator.
Comment:	CDC25B Blocking Peptide, catalog no. 33R-5980, is also available for use as a blocking control in assays to test for specificity of this CDC25B antibody
Restrictions:	For Research Use only

Handling

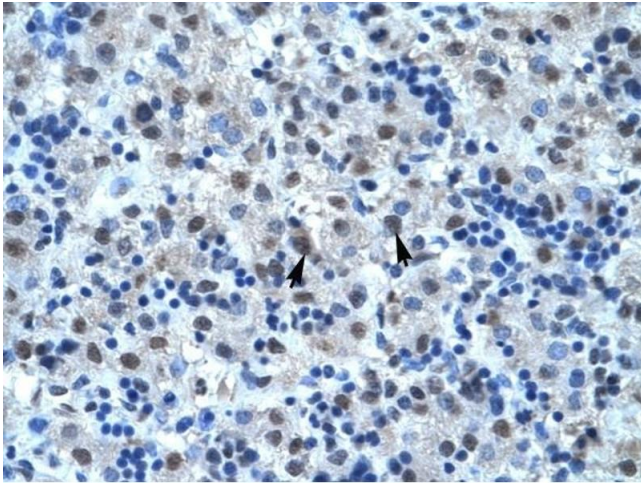
Format:	Lyophilized
Concentration:	Lot specific
Buffer:	Lyophilized powder. Add 50 µL of distilled water. Final antibody concentration is 1 mg/mL in PBS buffer.
Handling Advice:	Avoid repeated freeze/thaw cycles.
Storage:	4 °C/-20 °C
Storage Comment:	Store at 4 °C, following reconstitution, aliquot and store at -20 °C.

Images



Western Blotting

Image 1. CDC25B antibody (70R-10484) used at 0.2-1 µg/ml to detect target protein.



Immunohistochemistry

Image 2. CDC25B antibody was used for immunohistochemistry at a concentration of 4-8 ug/ml to stain Hepatocytes (arrows) in Human Liver. Magnification is at 400X.