

Datasheet for ABIN926909
anti-FOXM1 antibody (Middle Region)



[Go to Product page](#)

2 Images

Overview

Quantity:	100 µL
Target:	FOXM1
Binding Specificity:	Middle Region
Reactivity:	Human, Rat, Mouse, Dog
Host:	Rabbit
Clonality:	Polyclonal
Conjugate:	This FOXM1 antibody is un-conjugated
Application:	Western Blotting (WB)

Product Details

Immunogen:	FOXM1 antibody was raised in rabbit using the middle region of FOXM1 as the immunogen
Cross-Reactivity:	Mouse (Murine), Rat (Rattus), Dog (Canine)
Purification:	Purified

Target Details

Target:	FOXM1
Alternative Name:	FOXM1 (FOXM1 Products)
Background:	FOXM1 is a transcriptional activatory factor. It may play a role in the control of cell proliferation. Synonyms: Polyclonal FOXM1 antibody, Anti-FOXM1 antibody, forkhead box M1 antibody, FKHL16 antibody, FOXM1B antibody, HFH-11 antibody, HFH11 antibody, HNF-3 antibody, INS-1 antibody, MPHOSPH2 antibody, MPP-2 antibody, MPP2 antibody, PIG29 antibody, TGT3

Target Details

antibody, TRIDENT antibody.

Pathways: [Positive Regulation of Response to DNA Damage Stimulus](#)

Application Details

Application Notes: Optimal conditions should be determined by the investigator.

Comment: FOXM1 Blocking Peptide, catalog no. 33R-1409, is also available for use as a blocking control in assays to test for specificity of this FOXM1 antibody

Restrictions: For Research Use only

Handling

Format: Lyophilized

Concentration: Lot specific

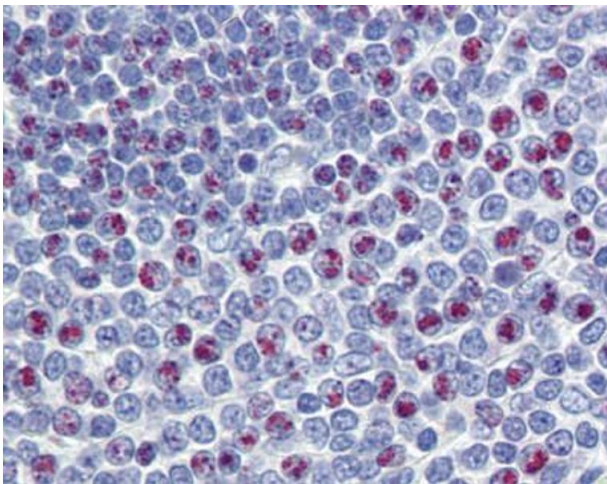
Buffer: Lyophilized powder. Add 50 μ L of distilled water. Final antibody concentration is 1 mg/mL in PBS buffer.

Handling Advice: Avoid repeated freeze/thaw cycles.

Storage: 4 °C/-20 °C

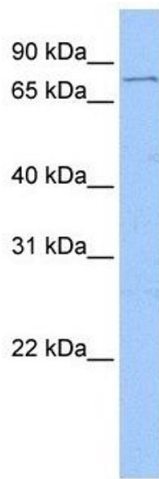
Storage Comment: Store at 4 °C, following reconstitution, aliquot and store at -20 °C.

Images



Immunohistochemistry

Image 1. FOXM1 antibody was used for immunohistochemistry at a concentration of 4-8 μ g/ml. Magnification is at 400X



Western Blotting

Image 2. Western Blot showing FOXM1 antibody used at a concentration of 1 ug/ml against Jurkat Cell Lysate