

Datasheet for ABIN926910  
**anti-Cyclin E2 antibody (N-Term)**



[Go to Product page](#)

1 Image

## Overview

Quantity:	100 µL
Target:	Cyclin E2 (CCNE2)
Binding Specificity:	N-Term
Reactivity:	Human, Mouse, Rat, Cow
Host:	Rabbit
Clonality:	Polyclonal
Conjugate:	This Cyclin E2 antibody is un-conjugated
Application:	Western Blotting (WB)

## Product Details

Immunogen:	CCNE2 antibody was raised in rabbit using the N terminal of CCNE2 as the immunogen
Cross-Reactivity:	Mouse (Murine), Rat (Rattus), Cow (Bovine)
Purification:	Purified

## Target Details

Target:	Cyclin E2 (CCNE2)
Alternative Name:	CCNE2 ( <a href="#">CCNE2 Products</a> )
Background:	The protein encoded by this gene belongs to the highly conserved cyclin family, whose members are characterized by a dramatic periodicity in protein abundance through the cell cycle. Cyclins function as regulators of CDK kinases. Different cyclins exhibit. Synonyms: Polyclonal CCNE2 antibody, Anti-CCNE2 antibody, cyclin E2 antibody, CYCE2 antibody.

## Target Details

---

Pathways: [Cell Division Cycle, Mitotic G1-G1/S Phases](#)

## Application Details

---

Application Notes: WB: 0.2-1 µg/mL  
Optimal conditions should be determined by the investigator.

Comment: CCNE2 Blocking Peptide, catalog no. 33R-9328, is also available for use as a blocking control in assays to test for specificity of this CCNE2 antibody

Restrictions: For Research Use only

## Handling

---

Format: Lyophilized

Concentration: Lot specific

Buffer: Lyophilized powder. Add 50 µL of distilled water. Final antibody concentration is 1 mg/mL in PBS buffer.

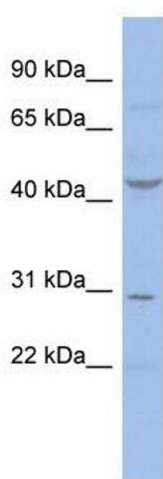
Handling Advice: Avoid repeated freeze/thaw cycles.

Storage: 4 °C/-20 °C

Storage Comment: Store at 4 °C, following reconstitution, aliquot and store at -20 °C.

## Images

---



### Western Blotting

**Image 1.** CCNE2 antibody (70R-10486) used at 0.2-1 µg/ml to detect target protein.