

Datasheet for ABIN926928
anti-GPR15 antibody (N-Term)



[Go to Product page](#)

1 Image

Overview

Quantity:	100 µL
Target:	GPR15
Binding Specificity:	N-Term
Reactivity:	Human, Mouse, Rat, Dog, Cow
Host:	Rabbit
Clonality:	Polyclonal
Conjugate:	This GPR15 antibody is un-conjugated
Application:	Western Blotting (WB)

Product Details

Immunogen:	GPR15 antibody was raised in rabbit using the N terminal of GPR15 as the immunogen
Cross-Reactivity:	Mouse (Murine), Rat (Rattus), Cow (Bovine), Dog (Canine)
Purification:	Purified

Target Details

Target:	GPR15
Alternative Name:	GPR15 (GPR15 Products)
Background:	GPR15 is a probable chemokine receptor. GPR15 is also an alternative coreceptor with CD4 for HIV-1 infection. Synonyms: Polyclonal GPR15 antibody, Anti-GPR15 antibody, G protein-coupled receptor 15 antibody, MGC126828 antibody, MGC126830 antibody.

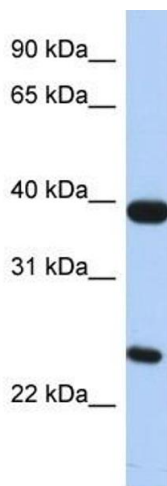
Application Details

Application Notes:	WB: 0.2-1 µg/mL Optimal conditions should be determined by the investigator.
Comment:	GPR15 Blocking Peptide, catalog no. 33R-2928, is also available for use as a blocking control in assays to test for specificity of this GPR15 antibody
Restrictions:	For Research Use only

Handling

Format:	Lyophilized
Concentration:	Lot specific
Buffer:	Lyophilized powder. Add 50 µL of distilled water. Final antibody concentration is 1 mg/mL in PBS buffer.
Handling Advice:	Avoid repeated freeze/thaw cycles.
Storage:	4 °C/-20 °C
Storage Comment:	Store at 4 °C, following reconstitution, aliquot and store at -20 °C.

Images



Western Blotting

Image 1. GPR15 antibody (70R-10504) used at 0.2-1 µg/ml to detect target protein.