

Datasheet for ABIN926932
anti-CMKLR1 antibody (C-Term)



[Go to Product page](#)

1 Image

Overview

Quantity:	100 µL
Target:	CMKLR1
Binding Specificity:	C-Term
Reactivity:	Mouse, Rat
Host:	Rabbit
Clonality:	Polyclonal
Conjugate:	This CMKLR1 antibody is un-conjugated
Application:	Western Blotting (WB)

Product Details

Immunogen:	CMKLR1 antibody was raised in rabbit using the C terminal of CMKLR1 as the immunogen
Cross-Reactivity:	Rat (Rattus)
Purification:	Purified

Target Details

Target:	CMKLR1
Alternative Name:	CMKLR1 (CMKLR1 Products)
Background:	CMKLR1 mediates the Resolvin E1 signal to attenuate nuclear factor-kappaB. Synonyms: Polyclonal CMKLR1 antibody, Anti-CMKLR1 antibody, chemokine-like receptor 1 antibody, ChemR23 antibody, DEZ antibody, MGC126105 antibody, MGC126106 antibody.

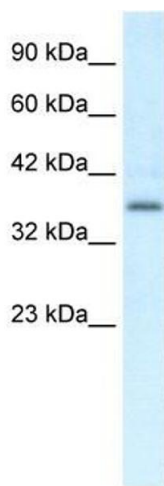
Application Details

Application Notes:	WB: 0.2-1 µg/mL Optimal conditions should be determined by the investigator.
Comment:	CMKLR1 Blocking Peptide, catalog no. 33R-4461, is also available for use as a blocking control in assays to test for specificity of this CMKLR1 antibody
Restrictions:	For Research Use only

Handling

Format:	Lyophilized
Concentration:	Lot specific
Buffer:	Lyophilized powder. Add 50 µL of distilled water. Final antibody concentration is 1 mg/mL in PBS buffer.
Handling Advice:	Avoid repeated freeze/thaw cycles.
Storage:	4 °C/-20 °C
Storage Comment:	Store at 4 °C, following reconstitution, aliquot and store at -20 °C.

Images



Western Blotting

Image 1. CMKLR1 antibody (70R-10508) used at 0.2-1 µg/ml to detect target protein.