

Datasheet for ABIN926942  
**anti-SREBF2 antibody (Middle Region)**



[Go to Product page](#)

1 Image

## Overview

Quantity:	100 µL
Target:	SREBF2
Binding Specificity:	Middle Region
Reactivity:	Human, Rat, Mouse, Pig, Dog, Chicken, Xenopus laevis
Host:	Rabbit
Clonality:	Polyclonal
Conjugate:	This SREBF2 antibody is un-conjugated
Application:	Western Blotting (WB)

## Product Details

Immunogen:	SREBF2 antibody was raised in rabbit using the middle region of SREBF2 as the immunogen
Cross-Reactivity:	Mouse (Murine), Rat (Rattus), Chicken, Pig (Porcine), Dog (Canine), Frog
Purification:	Purified

## Target Details

Target:	SREBF2
Alternative Name:	SREBF2 ( <a href="#">SREBF2 Products</a> )
Background:	SREBF2 is a ubiquitously expressed transcription factor that controls cholesterol homeostasis by stimulating transcription of sterol-regulated genes. This gene encodes a ubiquitously expressed transcription factor that controls cholesterol homeostasis by stimulating transcription of sterol-regulated genes. The encoded protein contains a basic helix-loop-helix-

## Target Details

leucine zipper (bHLH-Zip) domain. Synonyms: Polyclonal SREBF2 antibody, Anti-SREBF2 antibody, sterol regulatory element binding transcription factor 2 antibody, SREBP2 antibody.

Pathways: [Regulation of Lipid Metabolism by PPARalpha](#)

## Application Details

Application Notes: WB: 0.2-1 µg/mL  
Optimal conditions should be determined by the investigator.

Comment: SREBF2 Blocking Peptide, catalog no. 33R-6977, is also available for use as a blocking control in assays to test for specificity of this SREBF2 antibody

Restrictions: For Research Use only

## Handling

Format: Lyophilized

Concentration: Lot specific

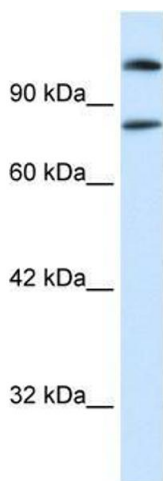
Buffer: Lyophilized powder. Add 50 µL of distilled water. Final antibody concentration is 1 mg/mL in PBS buffer.

Handling Advice: Avoid repeated freeze/thaw cycles.

Storage: 4 °C/-20 °C

Storage Comment: Store at 4 °C, following reconstitution, aliquot and store at -20 °C.

## Images



### Western Blotting

**Image 1.** SREBF2 antibody (70R-10518) used at 1 µg/ml to detect target protein.