

Datasheet for ABIN926943
anti-SRP72 antibody (Middle Region)



[Go to Product page](#)

1 Image

Overview

Quantity:	100 µL
Target:	SRP72
Binding Specificity:	Middle Region
Reactivity:	Human, Mouse, Zebrafish (Danio rerio), Cow, Rat, Dog, Chicken, Xenopus laevis
Host:	Rabbit
Clonality:	Polyclonal
Conjugate:	This SRP72 antibody is un-conjugated
Application:	Western Blotting (WB)

Product Details

Immunogen:	SRP72 antibody was raised in rabbit using the middle region of SRP72 as the immunogen
Cross-Reactivity:	Mouse (Murine), Rat (Rattus), Dog (Canine), Chicken, Cow (Bovine), Frog, Zebrafish (Brachydanio rerio)
Purification:	Purified

Target Details

Target:	SRP72
Alternative Name:	SRP72 (SRP72 Products)
Background:	Signal-recognition-particle assembly has a crucial role in targeting secretory proteins to the rough endoplasmic reticulum membrane. SRP72 binds the 7S RNA only in presence of SRP68. This ribonucleoprotein complex might interact directly with the docking protein in the ER

Target Details

membrane and possibly participate in the elongation arrest function. Synonyms: Polyclonal SRP72 antibody, Anti-SRP72 antibody, signal recognition particle 72kDa antibody.

Pathways: [SARS-CoV-2 Protein Interactome](#)

Application Details

Application Notes: WB: 0.2-1 µg/mL
Optimal conditions should be determined by the investigator.

Comment: SRP72 Blocking Peptide, catalog no. 33R-3212, is also available for use as a blocking control in assays to test for specificity of this SRP72 antibody

Restrictions: For Research Use only

Handling

Format: Lyophilized

Concentration: Lot specific

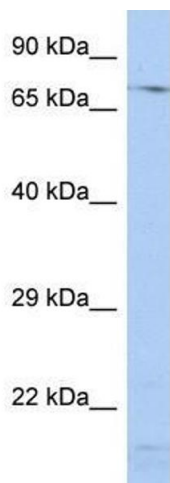
Buffer: Lyophilized powder. Add 50 µL of distilled water. Final antibody concentration is 1 mg/mL in PBS buffer.

Handling Advice: Avoid repeated freeze/thaw cycles.

Storage: 4 °C/-20 °C

Storage Comment: Store at 4 °C, following reconstitution, aliquot and store at -20 °C.

Images



Western Blotting

Image 1. SRP72 antibody (70R-10519) used at 1.25 µg/ml to detect target protein.