

Datasheet for ABIN926945
anti-CIDEB antibody (Middle Region)



[Go to Product page](#)

1 Image

Overview

Quantity:	100 µL
Target:	CIDEB
Binding Specificity:	Middle Region
Reactivity:	Human, Pig
Host:	Rabbit
Clonality:	Polyclonal
Conjugate:	This CIDEB antibody is un-conjugated
Application:	Western Blotting (WB)

Product Details

Immunogen:	CIDEB antibody was raised in rabbit using the middle region of CIDEB as the immunogen
Cross-Reactivity:	Pig (Porcine)
Purification:	Purified

Target Details

Target:	CIDEB
Alternative Name:	CIDEB (CIDEB Products)
Background:	CIDEB activates apoptosis. Synonyms: Polyclonal CIDEB antibody, Anti-CIDEB antibody, cell death-inducing DFFA-like effector b antibody.

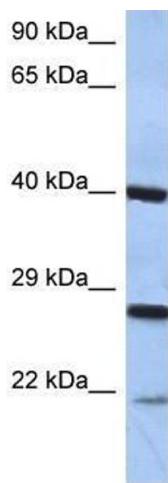
Application Details

Application Notes:	WB: 0.2-1 µg/mL Optimal conditions should be determined by the investigator.
Comment:	CIDEB Blocking Peptide, catalog no. 33R-4990, is also available for use as a blocking control in assays to test for specificity of this CIDEB antibody
Restrictions:	For Research Use only

Handling

Format:	Lyophilized
Concentration:	Lot specific
Buffer:	Lyophilized powder. Add 50 µL of distilled water. Final antibody concentration is 1 mg/mL in PBS buffer.
Handling Advice:	Avoid repeated freeze/thaw cycles.
Storage:	4 °C/-20 °C
Storage Comment:	Store at 4 °C, following reconstitution, aliquot and store at -20 °C.

Images



Western Blotting

Image 1. Western Blot showing CIDEB antibody used at a concentration of 1-2 µg/ml to detect its target protein.