

Datasheet for ABIN926948 **anti-BCL2A1 antibody (C-Term)**



[Go to Product page](#)

1 Image

Overview

Quantity:	100 µL
Target:	BCL2A1
Binding Specificity:	C-Term
Reactivity:	Human, Mouse, Rat, Pig, Dog, Cow
Host:	Rabbit
Clonality:	Polyclonal
Conjugate:	This BCL2A1 antibody is un-conjugated
Application:	Western Blotting (WB)

Product Details

Immunogen:	BCL2 A1 antibody was raised in rabbit using the C terminal of BCL2 1 as the immunogen
Cross-Reactivity:	Rat (Rattus), Mouse (Murine), Cow (Bovine), Dog (Canine), Pig (Porcine)
Purification:	Purified

Target Details

Target:	BCL2A1
Alternative Name:	BCL2A1 (BCL2A1 Products)
Background:	BCL2A1s a member of the BCL-2 protein family. The proteins of this family form hetero- or homodimers and act as anti- and pro-apoptotic regulators that are involved in a wide variety of cellular activities such as embryonic development, homeostasis and tumorigenesis. The protein encoded by this gene is able to reduce the release of pro-apoptotic cytochrome c from

Target Details

mitochondria and block caspase activation. Synonyms: Polyclonal BCL2A1 antibody, Anti-BCL2A1 antibody, BCL2-related protein A1 antibody.

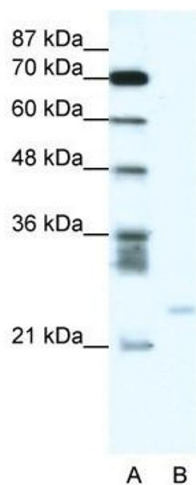
Application Details

Application Notes:	WB: 0.2-1 µg/mL Optimal conditions should be determined by the investigator.
Comment:	BCL2A1 Blocking Peptide, catalog no. 33R-2930, is also available for use as a blocking control in assays to test for specificity of this BCL2A1 antibody
Restrictions:	For Research Use only

Handling

Format:	Lyophilized
Concentration:	Lot specific
Buffer:	Lyophilized powder. Add 50 µL of distilled water. Final antibody concentration is 1 mg/mL in PBS buffer.
Handling Advice:	Avoid repeated freeze/thaw cycles.
Storage:	4 °C/-20 °C
Storage Comment:	Store at 4 °C, following reconstitution, aliquot and store at -20 °C.

Images



Western Blotting

Image 1. BCL2A1 antibody (70R-10524) used at 0.2-1 ug/ml to detect target protein.