

Datasheet for ABIN926950
anti-SREBF1 antibody (Middle Region)



[Go to Product page](#)

2 Images

Overview

Quantity:	100 µL
Target:	SREBF1
Binding Specificity:	Middle Region
Reactivity:	Human, Rat, Mouse, Pig, Cow
Host:	Rabbit
Clonality:	Polyclonal
Conjugate:	This SREBF1 antibody is un-conjugated
Application:	Western Blotting (WB), Immunohistochemistry (IHC)

Product Details

Immunogen:	SREBF1 antibody was raised in rabbit using the middle region of SREBF1 as the immunogen
Cross-Reactivity:	Rat (Rattus), Mouse (Murine), Cow (Bovine), Pig (Porcine)
Purification:	Purified

Target Details

Target:	SREBF1
Alternative Name:	SREBF1 (SREBF1 Products)
Background:	SREBF1 is a transcription factor that binds to the sterol regulatory element-1 (SRE1), which is a decamer flanking the low density lipoprotein receptor gene and some genes involved in sterol biosynthesis. The protein is synthesized as a precursor that is attached to the nuclear membrane and endoplasmic reticulum. Synonyms: Polyclonal SREBF1 antibody, Anti-SREBF1

Target Details

antibody, sterol regulatory element binding transcription factor 1 antibody, SREBP1 antibody.

Pathways: [AMPK Signaling](#), [Caspase Cascade in Apoptosis](#), [Negative Regulation of Hormone Secretion](#), [Regulation of Lipid Metabolism by PPARalpha](#)

Application Details

Application Notes: WB: 0.2-1 µg/mL
Optimal conditions should be determined by the investigator.

Comment: SREBF1 Blocking Peptide, catalog no. 33R-1852, is also available for use as a blocking control in assays to test for specificity of this SREBF1 antibody

Restrictions: For Research Use only

Handling

Format: Lyophilized

Concentration: Lot specific

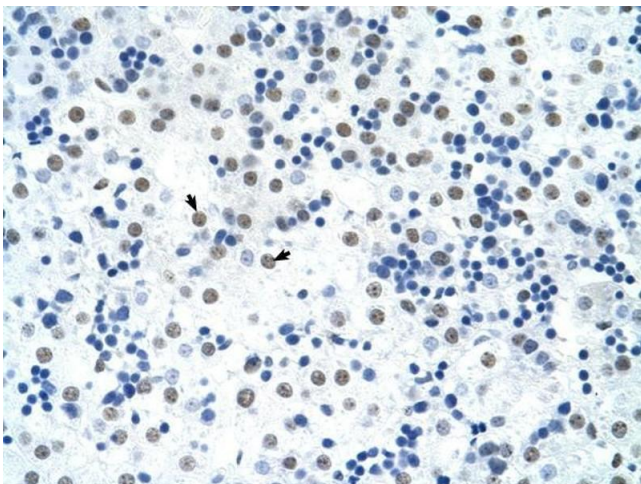
Buffer: Lyophilized powder. Add 50 µL of distilled water. Final antibody concentration is 1 mg/mL in PBS buffer.

Handling Advice: Avoid repeated freeze/thaw cycles.

Storage: 4 °C/-20 °C

Storage Comment: Store at 4 °C, following reconstitution, aliquot and store at -20 °C.

Images



Immunohistochemistry

Image 1. SREBF1 antibody was used for immunohistochemistry at a concentration of 16.0 ug/ml to stain Hepatocytes (arrows) in Human Liver. Magnification is at 400X.



Western Blotting

Image 2. Western Blot showing SREBF1 antibody used at a concentration of 1-2 ug/ml to detect its target protein.