

Datasheet for ABIN926951

anti-DP1 antibody (Middle Region)[Go to Product page](#)**1** Image

Overview

Quantity:	100 µL
Target:	DP1 (TFDP1)
Binding Specificity:	Middle Region
Reactivity:	Human, Mouse, Rat, Cow, Zebrafish (Danio rerio), Xenopus laevis
Host:	Rabbit
Clonality:	Polyclonal
Conjugate:	This DP1 antibody is un-conjugated
Application:	Western Blotting (WB)

Product Details

Immunogen:	TFDP1 antibody was raised in rabbit using the middle region of TFDP1 as the immunogen
Cross-Reactivity:	Mouse (Murine), Rat (Rattus), Cow (Bovine), Frog, Zebrafish (Brachydanio rerio)
Purification:	Purified

Target Details

Target:	DP1 (TFDP1)
Alternative Name:	TFDP1 (TFDP1 Products)
Background:	The E2F transcription factor family regulates the expression of various cellular promoters, particularly those involved in the cell cycle. E2F factors bind to DNA as homodimers or heterodimers in association with dimerization partner DP1. TFDP1 may be the first example of a family of related transcription factors and may have a role in progression of some

Target Details

hepatocellular carcinomas by promoting growth of the tumor cells. Synonyms: Polyclonal TFDP1 antibody, Anti-TFDP1 antibody, transcription factor Dp-1 antibody, DP1 antibody, DRTF1 antibody, Dp-1 antibody.

Pathways: [Cell Division Cycle, Mitotic G1-G1/S Phases](#)

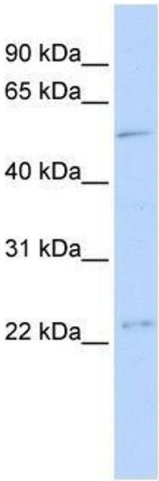
Application Details

Application Notes:	WB: 0.2-1 µg/mL Optimal conditions should be determined by the investigator.
Comment:	TFDP1 Blocking Peptide, catalog no. 33R-8314, is also available for use as a blocking control in assays to test for specificity of this TFDP1 antibody
Restrictions:	For Research Use only

Handling

Format:	Lyophilized
Concentration:	Lot specific
Buffer:	Lyophilized powder. Add 50 µL of distilled water. Final antibody concentration is 1 mg/mL in PBS buffer.
Handling Advice:	Avoid repeated freeze/thaw cycles.
Storage:	4 °C/-20 °C
Storage Comment:	Store at 4 °C, following reconstitution, aliquot and store at -20 °C.

Images



Western Blotting

Image 1. TFDP1 antibody (70R-10527) used at 0.2-1 ug/ml to detect target protein.