

Datasheet for ABIN926957
anti-APBA3 antibody (N-Term)



[Go to Product page](#)

1 Image

Overview

Quantity:	100 µL
Target:	APBA3
Binding Specificity:	N-Term
Reactivity:	Human, Dog
Host:	Rabbit
Clonality:	Polyclonal
Conjugate:	This APBA3 antibody is un-conjugated
Application:	Western Blotting (WB)

Product Details

Immunogen:	APBA3 antibody was raised in rabbit using the N terminal of APBA3 as the immunogen
Cross-Reactivity:	Dog (Canine)
Purification:	Purified

Target Details

Target:	APBA3
Alternative Name:	APBA3 (APBA3 Products)
Background:	APBA3 is a member of the X11 protein family. It is an adapter protein that interacts with the Alzheimer's disease amyloid precursor protein. This protein is believed to be involved in signal transduction processes. This gene is a candidate gene for Alzheimer's disease. Synonyms: Polyclonal APBA3 antibody, Anti-APBA3 antibody, amyloid beta, A4 precursor protein-binding,

Target Details

family A, member 3, X11-like 2 antibody, MGC:15815 antibody, X11L2 antibody, mint3 antibody.

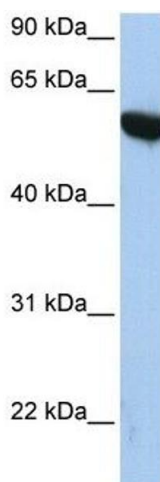
Application Details

Application Notes:	WB: 0.2-1 µg/mL Optimal conditions should be determined by the investigator.
Comment:	APBA3 Blocking Peptide, catalog no. 33R-2097, is also available for use as a blocking control in assays to test for specificity of this APBA3 antibody
Restrictions:	For Research Use only

Handling

Format:	Lyophilized
Concentration:	Lot specific
Buffer:	Lyophilized powder. Add 50 µL of distilled water. Final antibody concentration is 1 mg/mL in PBS buffer.
Handling Advice:	Avoid repeated freeze/thaw cycles.
Storage:	4 °C/-20 °C
Storage Comment:	Store at 4 °C, following reconstitution, aliquot and store at -20 °C.

Images



Western Blotting

Image 1. APBA3 antibody (70R-10533) used at 1.25 µg/ml to detect target protein.