

Datasheet for ABIN926962 **anti-CHRNA4 antibody (N-Term)**



[Go to Product page](#)

1 Image

Overview

Quantity:	100 µL
Target:	CHRNA4
Binding Specificity:	N-Term
Reactivity:	Human, Mouse, Rat, Cow, Chicken
Host:	Rabbit
Clonality:	Polyclonal
Conjugate:	This CHRNA4 antibody is un-conjugated
Application:	Western Blotting (WB)

Product Details

Immunogen:	CHRNA4 antibody was raised in rabbit using the N terminal of CHRNA4 as the immunogen
Cross-Reactivity:	Mouse (Murine), Rat (Rattus), Cow (Bovine), Chicken
Purification:	Purified

Target Details

Target:	CHRNA4
Alternative Name:	CHRNA4 (CHRNA4 Products)
Background:	CHRNA4 is a nicotinic acetylcholine receptor, which belongs to a superfamily of ligand-gated ion channels that play a role in fast signal transmission at synapses. These pentameric receptors can bind acetylcholine, which causes an extensive change in conformation that leads to the opening of an ion-conducting channel across the plasma membrane. This protein is an

Target Details

integral membrane receptor subunit that can interact with either nAChR beta-2 or nAChR beta-4 to form a functional receptor. Mutations in this gene cause nocturnal frontal lobe epilepsy type 1. Polymorphisms in this gene that provide protection against nicotine addiction have been described. Synonyms: Polyclonal CHRNA4 antibody, Anti-CHRNA4 antibody, cholinergic receptor, nicotinic, alpha 4 antibody, BFNC antibody, EBN antibody, EBN1 antibody, NACRA4 antibody.

Pathways: [Synaptic Membrane](#)

Application Details

Application Notes: WB: 0.2-1 µg/mL
Optimal conditions should be determined by the investigator.

Comment: CHRNA4 Blocking Peptide, catalog no. 33R-2546, is also available for use as a blocking control in assays to test for specificity of this CHRNA4 antibody

Restrictions: For Research Use only

Handling

Format: Lyophilized

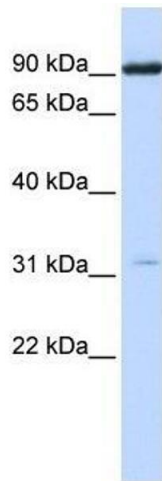
Concentration: Lot specific

Buffer: Lyophilized powder. Add 50 µL of distilled water. Final antibody concentration is 1 mg/mL in PBS buffer.

Handling Advice: Avoid repeated freeze/thaw cycles.

Storage: 4 °C/-20 °C

Storage Comment: Store at 4 °C, following reconstitution, aliquot and store at -20 °C.



Western Blotting

Image 1. Western Blot showing CHRNA4 antibody used at a concentration of 1-2 ug/ml to detect its target protein.