

## Datasheet for ABIN926966 **anti-CHRN3 antibody (Middle Region)**



[Go to Product page](#)

### 1 Image

#### Overview

|                      |   |
|----------------------|---|
| Quantity:            | 100 µL  |
| Target:              | CHRN3   |
| Binding Specificity: | Middle Region                                   |
| Reactivity:          | Human, Mouse, Rat, Dog, Chicken, Xenopus laevis |
| Host:                | Rabbit  |
| Clonality:           | Polyclonal                                      |
| Conjugate:           | This CHRN3 antibody is un-conjugated            |
| Application:         | Western Blotting (WB)                           |

#### Product Details

|                   |   |
|-------------------|---|
| Immunogen:        | CHRN3 antibody was raised in rabbit using the middle region of CHRN3 as the immunogen |
| Cross-Reactivity: | Mouse (Murine), Rat (Rattus), Dog (Canine), Chicken, Frog                             |
| Purification:     | Purified  |

#### Target Details

|                   |  |
|-------------------|--|
| Target:           | CHRN3  |
| Alternative Name: | CHRN3 ( <a href="#">CHRN3 Products</a> )   |
| Background:       | Nicotinic acetylcholine receptors (nAChRs) are ligand-gated ion channels nAChRs are pentameric structures that are made up of combinations of individual subunits. CHRN3 is one of the subunits of nAChR. Twelve neuronal nAChR subunits have been described, alpha2-alpha10 and beta2-beta4. CHRN3 decreased the channel mean open time and burst length. |

## Target Details

---

There was also an increase in single channel slope conductance. On the other hand, the calcium permeability and the pharmacological properties of beta3-containing receptors differed little from those of without beta3. Dysfunction of nAChR has been linked to a number of human diseases such as schizophrenia, Alzheimer's and Parkinson's diseases. nAChRs also play a significant role in nicotine addiction. Synonyms: Polyclonal CHRNB3 antibody, Anti-CHRNB3 antibody, cholinergic receptor, nicotinic, beta 3 antibody.

## Application Details

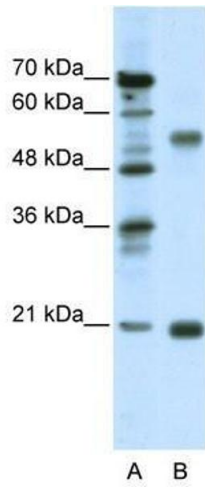
---

|                    |   |
|--------------------|---|
| Application Notes: | WB: 0.03 µg/mL<br>Optimal conditions should be determined by the investigator.  |
| Comment:           | CHRNB3 Blocking Peptide, catalog no. 33R-10069, is also available for use as a blocking control in assays to test for specificity of this CHRNB3 antibody |
| Restrictions:      | For Research Use only   |

## Handling

---

|                  |  |
|------------------|--|
| Format:          | Lyophilized  |
| Concentration:   | Lot specific   |
| Buffer:          | Lyophilized powder. Add 50 µL of distilled water. Final antibody concentration is 1 mg/mL in PBS buffer. |
| Handling Advice: | Avoid repeated freeze/thaw cycles.   |
| Storage:         | 4 °C/-20 °C  |
| Storage Comment: | Store at 4 °C, following reconstitution, aliquot and store at -20 °C.                                    |



### Western Blotting

**Image 1.** Western Blot showing CHRNB3 antibody used at a concentration of 1-2 ug/ml to detect its target protein.