

Datasheet for ABIN926967
anti-CHRND antibody (N-Term)



[Go to Product page](#)

2 Images

Overview

Quantity:	100 µL
Target:	CHRND
Binding Specificity:	N-Term
Reactivity:	Human, Rat, Dog, Zebrafish (Danio rerio), Cow
Host:	Rabbit
Clonality:	Polyclonal
Conjugate:	This CHRND antibody is un-conjugated
Application:	Western Blotting (WB), Immunohistochemistry (IHC)

Product Details

Immunogen:	CHRND antibody was raised in rabbit using the N terminal of CHRND as the immunogen
Cross-Reactivity:	Dog (Canine), Rat (Rattus), Cow (Bovine), Zebrafish (Brachydanio rerio)
Purification:	Purified

Target Details

Target:	CHRND
Alternative Name:	CHRND (CHRND Products)
Background:	The acetylcholine receptor of muscle has 5 subunits of 4 different types: 2 alpha and 1 each of beta, gamma and delta subunits. After acetylcholine binding, the receptor undergoes an extensive conformation change that affects all subunits and leads to opening of an ion-conducting channel across the plasma membrane. Synonyms: Polyclonal CHRND antibody,

Target Details

Anti-CHRND antibody, cholinergic receptor, nicotinic, delta antibody.

Application Details

Application Notes: WB: 0.2-1 µg/mL
Optimal conditions should be determined by the investigator.

Restrictions: For Research Use only

Handling

Format: Lyophilized

Concentration: Lot specific

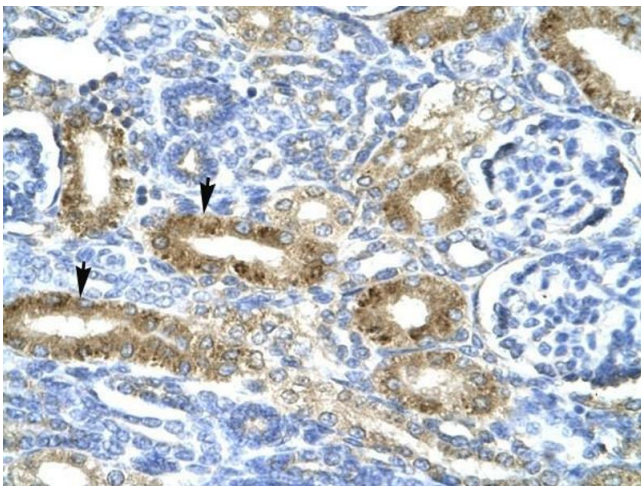
Buffer: Lyophilized powder. Add 50 µL of distilled water. Final antibody concentration is 1 mg/mL in PBS buffer.

Handling Advice: Avoid repeated freeze/thaw cycles.

Storage: 4 °C/-20 °C

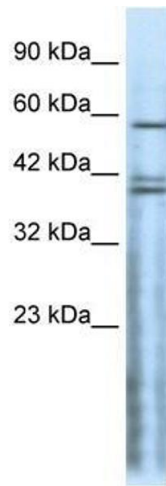
Storage Comment: Store at 4 °C, following reconstitution, aliquot and store at -20 °C.

Images



Immunohistochemistry

Image 1. CHRND antibody was used for immunohistochemistry at a concentration of 4-8 µg/ml to stain Epithelial cells of renal tubule (arrows) in Human Kidney. Magnification is at 400X.



Western Blotting

Image 2. Western Blot showing CHRND antibody used at a concentration of 1-2 ug/ml to detect its target protein.