

## Datasheet for ABIN926968 **anti-CHRNA1 antibody (N-Term)**



[Go to Product page](#)

### 1 Image

#### Overview

Quantity:	100 µL
Target:	CHRNA1
Binding Specificity:	N-Term
Reactivity:	Human, Mouse, Rat, Cow, Dog
Host:	Rabbit
Clonality:	Polyclonal
Conjugate:	This CHRNA1 antibody is un-conjugated
Application:	Western Blotting (WB)

#### Product Details

Immunogen:	CHRNA1 antibody was raised in rabbit using the N terminal of CHRNA1 as the immunogen
Cross-Reactivity:	Mouse (Murine), Rat (Rattus), Dog (Canine), Cow (Bovine)
Purification:	Purified

#### Target Details

Target:	CHRNA1
Alternative Name:	CHRNA1 ( <a href="#">CHRNA1 Products</a> )
Background:	For background information on the acetylcholine receptor (AChR), see CHRNA1. Two forms of AChR are found in mammalian skeletal muscle cells. The mature form is predominant in innervated adult muscle and the embryonic form is present in fetal and denervated muscle. Embryonic and mature AChR differ by the replacement of the gamma subunit in the pentameric

## Target Details

glycoprotein complex by its isoform, the epsilon subunit, which is specific to the mature AChR subtype. This switch is mediated by ARIA (acetylcholine receptor-inducing activity. Synonyms: Polyclonal CHRNG antibody, Anti-CHRNG antibody, cholinergic receptor, nicotinic, gamma antibody, ACHRG antibody, MGC133376 antibody.

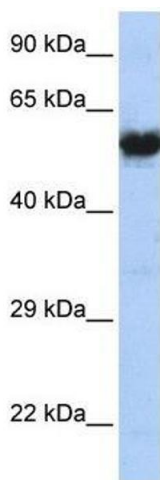
## Application Details

Application Notes:	Optimal conditions should be determined by the investigator.
Comment:	CHRNG Blocking Peptide, catalog no. 33R-6936, is also available for use as a blocking control in assays to test for specificity of this CHRNG antibody
Restrictions:	For Research Use only

## Handling

Format:	Lyophilized
Concentration:	Lot specific
Buffer:	Lyophilized powder. Add 50 $\mu$ L of distilled water. Final antibody concentration is 1 mg/mL in PBS buffer.
Handling Advice:	Avoid repeated freeze/thaw cycles.
Storage:	4 $^{\circ}$ C/-20 $^{\circ}$ C
Storage Comment:	Store at 4 $^{\circ}$ C, following reconstitution, aliquot and store at -20 $^{\circ}$ C.

## Images



### Western Blotting

**Image 1.** CHRNG antibody (70R-10544) used at 2.5  $\mu$ g/ml to detect target protein.