

Datasheet for ABIN926970 **anti-GABRG2 antibody (N-Term)**



[Go to Product page](#)

1 Image

Overview

Quantity:	100 µL
Target:	GABRG2
Binding Specificity:	N-Term
Reactivity:	Human, Mouse, Rat, Cow, Dog, Chicken
Host:	Rabbit
Clonality:	Polyclonal
Conjugate:	This GABRG2 antibody is un-conjugated
Application:	Western Blotting (WB)

Product Details

Immunogen:	GABRG2 antibody was raised in rabbit using the N terminal of GABRG2 as the immunogen
Cross-Reactivity:	Mouse (Murine), Rat (Rattus), Dog (Canine), Cow (Bovine), Chicken
Purification:	Purified

Target Details

Target:	GABRG2
Alternative Name:	GABRG2 (GABRG2 Products)
Background:	GABRG2 is a gamma-aminobutyric acid (GABA) receptor. GABA is the major inhibitory neurotransmitter in the mammalian brain, where it acts at GABA-A receptors, which are ligand-gated chloride channels. GABA-A receptors are pentameric, consisting of proteins from several subunit classes: alpha, beta, gamma, delta and rho. Mutations in this gene have been

Target Details

associated with epilepsy and febrile seizures. Multiple transcript variants encoding different isoforms have been identified for this gene. Synonyms: Polyclonal GABRG2 antibody, Anti-GABRG2 antibody, gamma-aminobutyric acid, GABA A receptor, gamma 2 antibody, CAE2 antibody, ECA2 antibody, GEFSP3 antibody.

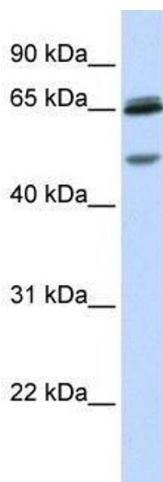
Application Details

Application Notes:	WB: 0.2-1 µg/mL Optimal conditions should be determined by the investigator.
Comment:	GABRG2 Blocking Peptide, catalog no. 33R-3267, is also available for use as a blocking control in assays to test for specificity of this GABRG2 antibody
Restrictions:	For Research Use only

Handling

Format:	Lyophilized
Concentration:	Lot specific
Buffer:	Lyophilized powder. Add 50 µL of distilled water. Final antibody concentration is 1 mg/mL in PBS buffer.
Handling Advice:	Avoid repeated freeze/thaw cycles.
Storage:	4 °C/-20 °C
Storage Comment:	Store at 4 °C, following reconstitution, aliquot and store at -20 °C.

Images



Western Blotting

Image 1. Western Blot showing GABRG2 antibody used at a concentration of 1-2 µg/ml to detect its target protein.