

Datasheet for ABIN926971 **anti-GABRP antibody (N-Term)**

2 Images



[Go to Product page](#)

Overview

Quantity:	100 µL
Target:	GABRP
Binding Specificity:	N-Term
Reactivity:	Mouse, Human, Rat, Dog, Cow
Host:	Rabbit
Clonality:	Polyclonal
Conjugate:	This GABRP antibody is un-conjugated
Application:	Western Blotting (WB), Immunohistochemistry (IHC)

Product Details

Immunogen:	GABRP antibody was raised in rabbit using the N terminal of GABRP as the immunogen
Cross-Reactivity:	Mouse (Murine), Rat (Rattus), Dog (Canine), Cow (Bovine)
Purification:	Purified

Target Details

Target:	GABRP
Alternative Name:	GABRP (GABRP Products)
Background:	The gamma-aminobutyric acid (GABA) A receptor is a multisubunit chloride channel that mediates the fastest inhibitory synaptic transmission in the central nervous system. The subunit encoded GABRP is expressed in several non-neuronal tissues including the uterus and ovaries. This subunit can assemble with known GABA A receptor subunits, and the presence of

Target Details

this subunit alters the sensitivity of recombinant receptors to modulatory agents such as pregnanolone. The gamma-aminobutyric acid (GABA) A receptor is a multisubunit chloride channel that mediates the fastest inhibitory synaptic transmission in the central nervous system. Synonyms: Polyclonal GABRP antibody, Anti-GABRP antibody, gamma-aminobutyric acid, GABA A receptor, pi antibody, MGC126386 antibody, MGC126387 antibody.

Application Details

Application Notes: WB: 0.2-1 µg/mL
Optimal conditions should be determined by the investigator.

Restrictions: For Research Use only

Handling

Format: Lyophilized

Concentration: Lot specific

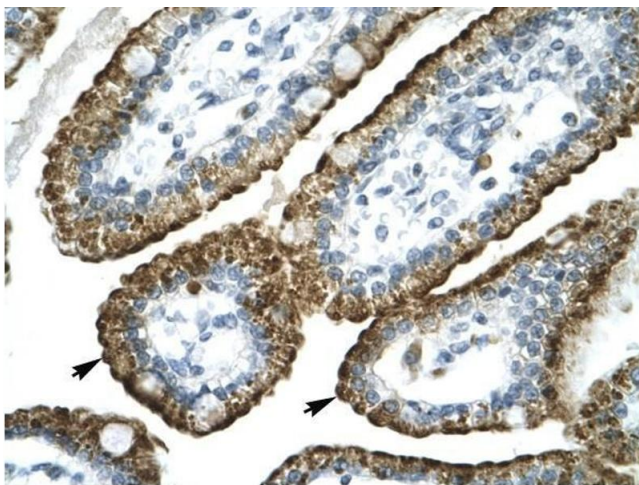
Buffer: Lyophilized powder. Add 50 µL of distilled water. Final antibody concentration is 1 mg/mL in PBS buffer.

Handling Advice: Avoid repeated freeze/thaw cycles.

Storage: 4 °C/-20 °C

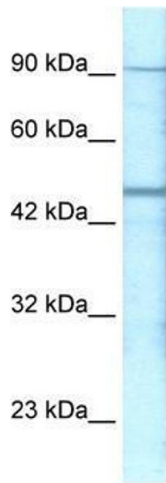
Storage Comment: Store at 4 °C, following reconstitution, aliquot and store at -20 °C.

Images



Immunohistochemistry

Image 1. GABRP antibody was used for immunohistochemistry at a concentration of 4-8 µg/ml to stain Epithelial cells of intestinal villus (Indicated with Arrows) in Human Intestine. Magnification is at 400X.



Western Blotting

Image 2. Western Blot showing GABRP antibody used at a concentration of 1-2 ug/ml to detect its target protein.