

Datasheet for ABIN926972  
**anti-GAL antibody (Middle Region)**



[Go to Product page](#)

1 Image

## Overview

|                      |                                    |
|----------------------|------------------------------------|
| Quantity:            | 100 µL                             |
| Target:              | GAL                                |
| Binding Specificity: | Middle Region                      |
| Reactivity:          | Human, Dog                         |
| Host:                | Rabbit                             |
| Clonality:           | Polyclonal                         |
| Conjugate:           | This GAL antibody is un-conjugated |
| Application:         | Western Blotting (WB)              |

## Product Details

|                   |   |
|-------------------|---|
| Immunogen:        | GAL antibody was raised in rabbit using the middle region of GAL as the immunogen |
| Cross-Reactivity: | Dog (Canine)  |
| Purification:     | Purified  |

## Target Details

|                   |   |
|-------------------|---|
| Target:           | GAL   |
| Alternative Name: | <a href="#">GAL (GAL Products)</a>  |
| Background:       | Galanin is small neuropeptide that functions as a cellular messenger within the central and peripheral nervous systems, modulating diverse physiologic functions. Synonyms: Polyclonal GAL antibody, Anti-GAL antibody, galanin prepropeptide antibody, GALN antibody, GLNN antibody, GMAP antibody, MGC40167 antibody. |

## Target Details

Pathways: [Hormone Transport, Regulation of Hormone Metabolic Process, Feeding Behaviour](#)

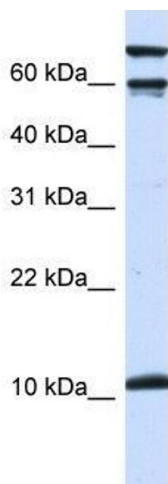
## Application Details

|                    |  |
|--------------------|--|
| Application Notes: | WB: 0.2-1 µg/mL<br>Optimal conditions should be determined by the investigator.  |
| Comment:           | GAL Blocking Peptide, catalog no. 33R-5242, is also available for use as a blocking control in assays to test for specificity of this GAL antibody |
| Restrictions:      | For Research Use only  |

## Handling

|                  |  |
|------------------|--|
| Format:          | Lyophilized  |
| Concentration:   | Lot specific   |
| Buffer:          | Lyophilized powder. Add 50 µL of distilled water. Final antibody concentration is 1 mg/mL in PBS buffer. |
| Handling Advice: | Avoid repeated freeze/thaw cycles.   |
| Storage:         | 4 °C/-20 °C  |
| Storage Comment: | Store at 4 °C, following reconstitution, aliquot and store at -20 °C.                                    |

## Images



### Western Blotting

**Image 1.** GAL antibody (70R-10548) used at 0.2-1 µg/ml to detect target protein.