

Datasheet for ABIN926973  
**anti-GDI2 antibody (C-Term)**



[Go to Product page](#)

1 Image

## Overview

Quantity:	100 µL
Target:	GDI2
Binding Specificity:	C-Term
Reactivity:	Human, Mouse, Rat, Dog, Cow, Pig, Chicken, Xenopus laevis
Host:	Rabbit
Clonality:	Polyclonal
Conjugate:	This GDI2 antibody is un-conjugated
Application:	Western Blotting (WB)

## Product Details

Immunogen:	GDI2 antibody was raised in rabbit using the C terminal of GDI2 as the immunogen
Cross-Reactivity:	Dog (Canine), Mouse (Murine), Rat (Rattus), Cow (Bovine), Chicken, Pig (Porcine), Frog
Purification:	Purified

## Target Details

Target:	GDI2
Alternative Name:	GDI2 ( <a href="#">GDI2 Products</a> )
Background:	GDP dissociation inhibitors are proteins that regulate the GDP-GTP exchange reaction of members of the rab family, small GTP-binding proteins of the ras superfamily, that are involved in vesicular trafficking of molecules between cellular organelles. GDIs slow the rate of dissociation of GDP from rab proteins and release GDP from membrane-bound rabs. The GDI2

## Target Details

gene contains many repetitive elements indicating that it may be prone to inversion/deletion rearrangements. Synonyms: Polyclonal GDI2 antibody, Anti-GDI2 antibody, GDP dissociation inhibitor 2 antibody.

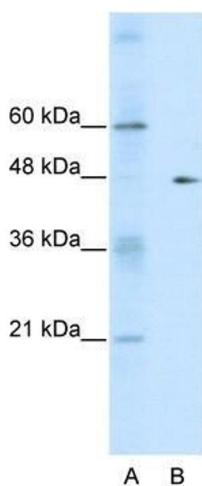
## Application Details

Application Notes:	WB: 0.2-1 µg/mL Optimal conditions should be determined by the investigator.
Comment:	GDI2 Blocking Peptide, catalog no. 33R-2630, is also available for use as a blocking control in assays to test for specificity of this GDI2 antibody
Restrictions:	For Research Use only

## Handling

Format:	Lyophilized
Concentration:	Lot specific
Buffer:	Lyophilized powder. Add 50 µL of distilled water. Final antibody concentration is 1 mg/mL in PBS buffer.
Handling Advice:	Avoid repeated freeze/thaw cycles.
Storage:	4 °C/-20 °C
Storage Comment:	Store at 4 °C, following reconstitution, aliquot and store at -20 °C.

## Images



### Western Blotting

**Image 1.** Western Blot showing GDI2 antibody used at a concentration of 1-2 µg/ml to detect its target protein.