

Datasheet for ABIN926979
anti-APBA1 antibody (N-Term)



[Go to Product page](#)

2 Images

Overview

Quantity:	100 µL
Target:	APBA1
Binding Specificity:	N-Term
Reactivity:	Human
Host:	Rabbit
Clonality:	Polyclonal
Conjugate:	This APBA1 antibody is un-conjugated
Application:	Western Blotting (WB), Immunohistochemistry (IHC)

Product Details

Immunogen:	APBA1 antibody was raised in rabbit using the N terminal of APBA1 as the immunogen
Purification:	Purified

Target Details

Target:	APBA1
Alternative Name:	APBA1 (APBA1 Products)
Background:	APBA1 is a member of the X11 protein family. It is a neuronal adaptor protein that interacts with the Alzheimer's disease amyloid precursor protein (APP). It stabilises APP and inhibits production of proteolytic APP fragments including the A beta peptide that is deposited in the brains of Alzheimer's disease patients. APBA1 is believed to be involved in signal transduction processes. It is also regarded as a putative vesicular trafficking protein in the brain that can

Target Details

form a complex with the potential to couple synaptic vesicle exocytosis to neuronal cell adhesion. Synonyms: Polyclonal APBA1 antibody, Anti-APBA1 antibody, amyloid beta, A4 precursor protein-binding, family A, member 1, X11 antibody, D9S411E antibody, MINT1 antibody, X11 antibody, X11A antibody, X11ALPHA antibody.

Pathways: [Synaptic Vesicle Exocytosis, Dicarboxylic Acid Transport](#)

Application Details

Application Notes: WB: 0.2-1 µg/mL
Optimal conditions should be determined by the investigator.

Comment: APBA1 Blocking Peptide, catalog no. 33R-7273, is also available for use as a blocking control in assays to test for specificity of this APBA1 antibody

Restrictions: For Research Use only

Handling

Format: Lyophilized

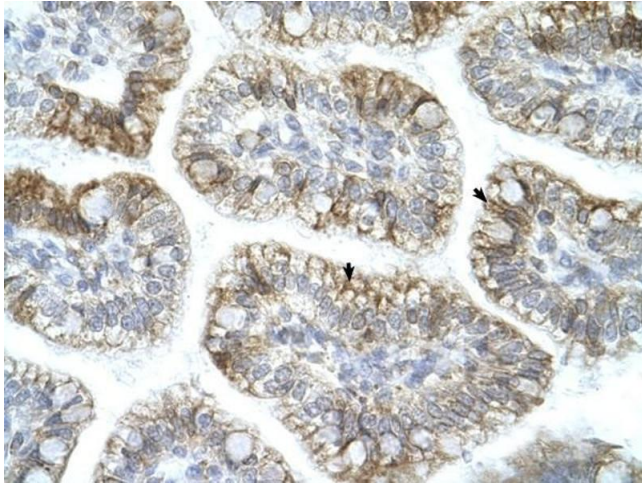
Concentration: Lot specific

Buffer: Lyophilized powder. Add 50 µL of distilled water. Final antibody concentration is 1 mg/mL in PBS buffer.

Handling Advice: Avoid repeated freeze/thaw cycles.

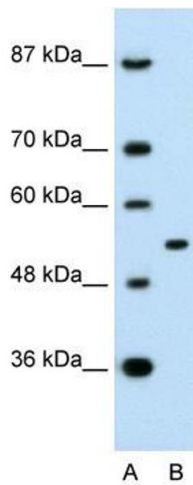
Storage: 4 °C/-20 °C

Storage Comment: Store at 4 °C, following reconstitution, aliquot and store at -20 °C.



Immunohistochemistry

Image 1. APBA1 antibody was used for immunohistochemistry at a concentration of 4-8 ug/ml to stain Epithelial cells of intestinal villus (arrows) in Human Intestine. Magnification is at 400X.



Western Blotting

Image 2. APBA1 antibody (70R-10555) used at 0.2-1 ug/ml to detect target protein.