

Datasheet for ABIN926981
anti-RAB8A antibody (Middle Region)



[Go to Product page](#)

1 Image

Overview

Quantity:	100 µL
Target:	RAB8A
Binding Specificity:	Middle Region
Reactivity:	Human, Mouse, Rat, Dog, Cow, Zebrafish (Danio rerio), Chicken, Xenopus laevis
Host:	Rabbit
Clonality:	Polyclonal
Conjugate:	This RAB8A antibody is un-conjugated
Application:	Western Blotting (WB)

Product Details

Immunogen:	RAB8 A antibody was raised in rabbit using the middle region of RAB8 as the immunogen
Cross-Reactivity:	Dog (Canine), Mouse (Murine), Rat (Rattus), Frog, Chicken, Cow (Bovine), Zebrafish (Brachydanio rerio)
Purification:	Purified

Target Details

Target:	RAB8A
Alternative Name:	RAB8A (RAB8A Products)
Background:	RAB8A is a member of the RAS superfamily which are small GTP/GDP-binding proteins with an average size of 200 amino acids. The RAS-related proteins of the RAB/YPT family may play a role in the transport of proteins from the endoplasmic reticulum to the Golgi and the plasma

Target Details

membrane. The putative effector-binding site of this protein is similar to that of the RAB/YPT proteins. However, this protein contains a C-terminal CAAX motif that is characteristic of many RAS superfamily members but which is not found in YPT1 and the majority of RAB proteins. Although this gene was isolated as a transforming gene from a melanoma cell line, no linkage between MEL and malignant melanoma has been demonstrable. Synonyms: Polyclonal RAB8A antibody, Anti-RAB8A antibody, RAB8A, member RAS oncogene family antibody, MEL antibody, RAB8 antibody.

Pathways: [M Phase](#), [Regulation of long-term Neuronal Synaptic Plasticity](#), [SARS-CoV-2 Protein Interactome](#)

Application Details

Application Notes: WB: 0.2-1 µg/mL
Optimal conditions should be determined by the investigator.

Comment: RAB8A Blocking Peptide, catalog no. 33R-3327, is also available for use as a blocking control in assays to test for specificity of this RAB8A antibody

Restrictions: For Research Use only

Handling

Format: Lyophilized

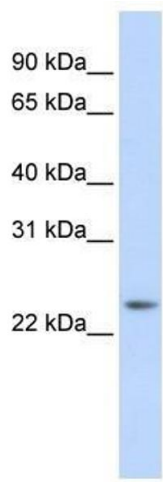
Concentration: Lot specific

Buffer: Lyophilized powder. Add 50 µL of distilled water. Final antibody concentration is 1 mg/mL in PBS buffer.

Handling Advice: Avoid repeated freeze/thaw cycles.

Storage: 4 °C/-20 °C

Storage Comment: Store at 4 °C, following reconstitution, aliquot and store at -20 °C.



Western Blotting

Image 1. RAB8A antibody (70R-10557) used at 0.2-1 ug/ml to detect target protein.