

Datasheet for ABIN926982  
**anti-NAPB antibody (N-Term)**



[Go to Product page](#)

1 Image

## Overview

Quantity:	100 µL
Target:	NAPB
Binding Specificity:	N-Term
Reactivity:	Human, Mouse, Rat, Dog, Cow, Chicken, Zebrafish (Danio rerio)
Host:	Rabbit
Clonality:	Polyclonal
Conjugate:	This NAPB antibody is un-conjugated
Application:	Western Blotting (WB)

## Product Details

Immunogen:	NAPB antibody was raised in rabbit using the N terminal of NAPB as the immunogen
Cross-Reactivity:	Mouse (Murine), Rat (Rattus), Cow (Bovine), Dog (Canine), Chicken, Zebrafish (Brachydanio rerio)
Purification:	Purified

## Target Details

Target:	NAPB
Alternative Name:	NAPB ( <a href="#">NAPB Products</a> )
Background:	NAPB is required for vesicular transport between the endoplasmic reticulum and the Golgi apparatus. Synonyms: Polyclonal NAPB antibody, Anti-NAPB antibody, N-ethylmaleimide-sensitive factor attachment protein, beta antibody, MGC26066 antibody, MGC48335 antibody,

## Target Details

SNAP-BETA antibody.

Pathways: [Synaptic Vesicle Exocytosis](#)

## Application Details

Application Notes: WB: 0.2-1 µg/mL  
Optimal conditions should be determined by the investigator.

Comment: NAPB Blocking Peptide, catalog no. 33R-5852, is also available for use as a blocking control in assays to test for specificity of this NAPB antibody

Restrictions: For Research Use only

## Handling

Format: Lyophilized

Concentration: Lot specific

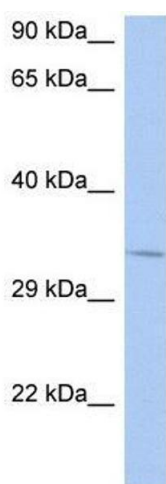
Buffer: Lyophilized powder. Add 50 µL of distilled water. Final antibody concentration is 1 mg/mL in PBS buffer.

Handling Advice: Avoid repeated freeze/thaw cycles.

Storage: 4 °C/-20 °C

Storage Comment: Store at 4 °C, following reconstitution, aliquot and store at -20 °C.

## Images



### Western Blotting

**Image 1.** NAPB antibody (70R-10558) used at 0.2-1 µg/ml to detect target protein.