

Datasheet for ABIN926983 **anti-CHRNA1 antibody (C-Term)**



[Go to Product page](#)

2 Images

Overview

Quantity:	100 µL
Target:	CHRNA1
Binding Specificity:	C-Term
Reactivity:	Human, Mouse, Rat, Dog, Cow, Chicken
Host:	Rabbit
Clonality:	Polyclonal
Conjugate:	This CHRNA1 antibody is un-conjugated
Application:	Western Blotting (WB), Immunohistochemistry (IHC)

Product Details

Immunogen:	CHRNA1 antibody was raised in rabbit using the C terminal of CHRNA1 as the immunogen
Cross-Reactivity:	Dog (Canine), Mouse (Murine), Rat (Rattus), Cow (Bovine), Chicken
Purification:	Purified

Target Details

Target:	CHRNA1
Alternative Name:	CHRNA1 (CHRNA1 Products)
Background:	CHRNA1 encodes an alpha subunit that plays a role in acetylcholine binding/channel gating. The muscle acetylcholine receptor consists of 5 subunits of 4 different types: 2 alpha isoforms and 1 each of beta, gamma, and delta subunits. Synonyms: Polyclonal CHRNA1 antibody, Anti-CHRNA1 antibody, cholinergic receptor, nicotinic, alpha 1, muscle antibody.

Target Details

Pathways: [Skeletal Muscle Fiber Development](#)

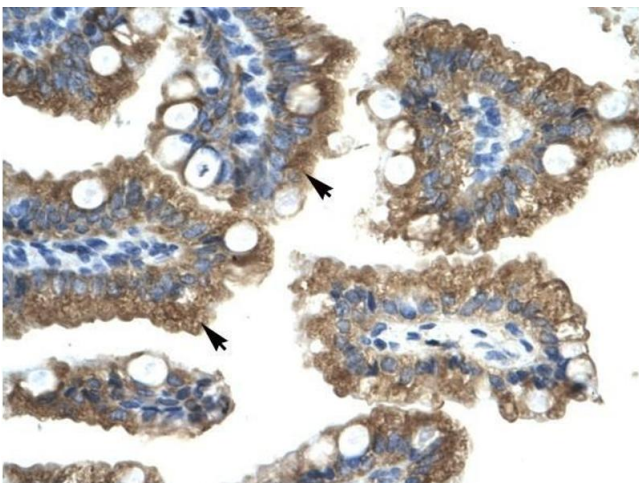
Application Details

Application Notes:	WB: 0.12 µg/mL Optimal conditions should be determined by the investigator.
Comment:	CHRNA1 Blocking Peptide, catalog no. 33R-8867, is also available for use as a blocking control in assays to test for specificity of this CHRNA1 antibody
Restrictions:	For Research Use only

Handling

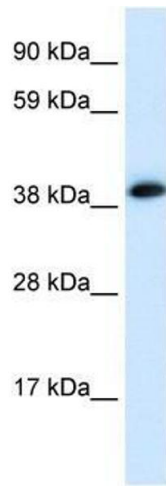
Format:	Lyophilized
Concentration:	Lot specific
Buffer:	Lyophilized powder. Add 50 µL of distilled water. Final antibody concentration is 1 mg/mL in PBS buffer.
Handling Advice:	Avoid repeated freeze/thaw cycles.
Storage:	4 °C/-20 °C
Storage Comment:	Store at 4 °C, following reconstitution, aliquot and store at -20 °C.

Images



Immunohistochemistry

Image 1. CHRNA1 antibody was used for immunohistochemistry at a concentration of 4-8 ug/ml to stain Epithelial cells of intestinal villus (arrows) in Human Intestine. Magnification is at 400X.



Western Blotting

Image 2. CHRNA1 antibody (70R-10559) used at 0.2-1 ug/ml to detect target protein.