

## Datasheet for ABIN926984 **anti-RPH3A antibody (N-Term)**



[Go to Product page](#)

### 1 Image

#### Overview

Quantity:	100 µL
Target:	RPH3A
Binding Specificity:	N-Term
Reactivity:	Human, Mouse, Rat, Dog, Cow, Chicken, Xenopus laevis
Host:	Rabbit
Clonality:	Polyclonal
Conjugate:	This RPH3A antibody is un-conjugated
Application:	Western Blotting (WB)

#### Product Details

Immunogen:	RPH3 A antibody was raised in rabbit using the N terminal of RPH3 as the immunogen
Cross-Reactivity:	Mouse (Murine), Rat (Rattus), Cow (Bovine), Dog (Canine), Chicken, Frog
Purification:	Purified

#### Target Details

Target:	RPH3A
Alternative Name:	RPH3A ( <a href="#">RPH3A Products</a> )
Background:	RPH3A is a protein transport. RPH3A is probably involved with Ras-related protein Rab-3A in synaptic vesicle traffic and/or synaptic vesicle fusion. RPH3A could play a role in neurotransmitter release by regulating membrane flow in the nerve terminal. Synonyms: Polyclonal RPH3A antibody, Anti-RPH3A antibody, rabphilin 3A homolog, mouse antibody,

## Target Details

KIAA0985 antibody.

Pathways: [Synaptic Vesicle Exocytosis](#)

## Application Details

Application Notes: WB: 0.2-1 µg/mL  
Optimal conditions should be determined by the investigator.

Comment: RPH3A Blocking Peptide, catalog no. 33R-3507, is also available for use as a blocking control in assays to test for specificity of this RPH3A antibody

Restrictions: For Research Use only

## Handling

Format: Lyophilized

Concentration: Lot specific

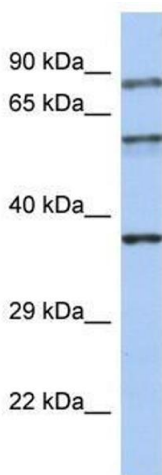
Buffer: Lyophilized powder. Add 50 µL of distilled water. Final antibody concentration is 1 mg/mL in PBS buffer.

Handling Advice: Avoid repeated freeze/thaw cycles.

Storage: 4 °C/-20 °C

Storage Comment: Store at 4 °C, following reconstitution, aliquot and store at -20 °C.

## Images



### Western Blotting

**Image 1.** Western Blot showing RPH3A antibody used at a concentration of 1-2 µg/ml to detect its target protein.