

## Datasheet for ABIN926996 **anti-PEDF antibody (N-Term)**

### 2 Images



[Go to Product page](#)

### Overview

Quantity:	100 µL
Target:	PEDF (SERPINF1)
Binding Specificity:	N-Term
Reactivity:	Human, Mouse, Rat, Cow, Pig
Host:	Rabbit
Clonality:	Polyclonal
Conjugate:	This PEDF antibody is un-conjugated
Application:	Western Blotting (WB), Immunohistochemistry (IHC)

### Product Details

Immunogen:	SERPINF1 antibody was raised in rabbit using the N terminal of SERPINF1 as the immunogen
Cross-Reactivity:	Mouse (Murine), Rat (Rattus), Cow (Bovine), Pig (Porcine)
Purification:	Purified

### Target Details

Target:	PEDF (SERPINF1)
Alternative Name:	SERPINF1 ( <a href="#">SERPINF1 Products</a> )
Background:	<p>The SERPINF1 gene may play a significant role in determining the balance of angiogenesis/ antiangiogenesis during atherogenesis. A novel role of extracellular phosphorylation is shown to completely change the nature of this gene from a neutrophic to an antiangiogenic factor.</p> <p>Synonyms: Polyclonal SERPINF1 antibody, Anti-SERPINF1 antibody, serpin peptidase inhibitor,</p>

## Target Details

clade F, alpha-2 antiplasmin, pigment epithelium derived factor, member 1 antibody.

## Application Details

Application Notes:	WB: 0.2-1 µg/mL Optimal conditions should be determined by the investigator.
Comment:	SERPINF1 Blocking Peptide, catalog no. 33R-3158, is also available for use as a blocking control in assays to test for specificity of this SERPINF1 antibody
Restrictions:	For Research Use only

## Handling

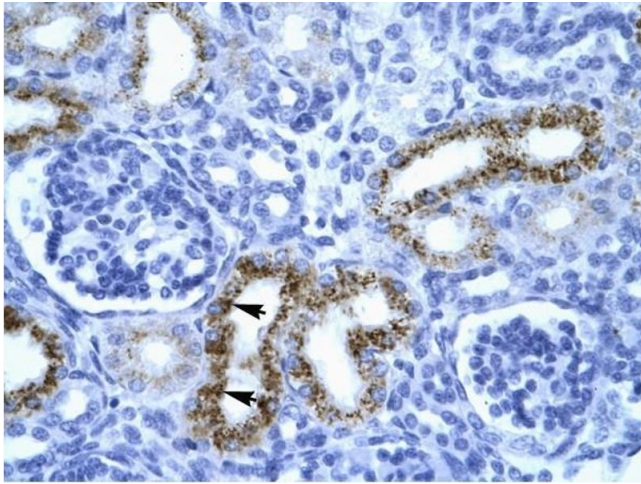
Format:	Lyophilized
Concentration:	Lot specific
Buffer:	Lyophilized powder. Add 50 µL of distilled water. Final antibody concentration is 1 mg/mL in PBS buffer.
Handling Advice:	Avoid repeated freeze/thaw cycles.
Storage:	4 °C/-20 °C
Storage Comment:	Store at 4 °C, following reconstitution, aliquot and store at -20 °C.

## Images



### Western Blotting

**Image 1.** SERPINF1 antibody (70R-10572) used at 0.2-1 µg/ml to detect target protein.



### Immunohistochemistry

**Image 2.** SERPINF1 antibody was used for immunohistochemistry at a concentration of 4-8 ug/ml to stain Epithelial cells of renal tubule (arrows) in Human Kidney. Magnification is at 400X