

Datasheet for ABIN927275  
**anti-ZBTB45 antibody (Middle Region)**



[Go to Product page](#)

2 Images

### Overview

Quantity:	100 µL
Target:	ZBTB45
Binding Specificity:	Middle Region
Reactivity:	Human, Mouse, Rat, Dog
Host:	Rabbit
Clonality:	Polyclonal
Conjugate:	This ZBTB45 antibody is un-conjugated
Application:	Western Blotting (WB), Immunohistochemistry (IHC)

### Product Details

Immunogen:	ZNF499 antibody was raised in rabbit using the middle region of ZNF499 as the immunogen
Cross-Reactivity:	Dog (Canine), Rat (Rattus), Mouse (MURINE)
Purification:	Purified

### Target Details

Target:	ZBTB45
Alternative Name:	ZNF499 ( <a href="#">ZBTB45 Products</a> )
Background:	The ZNF499 gene is located on chromosome 19 and encodes a protein with unknown function. Synonyms: Polyclonal ZNF499 antibody, Anti-ZNF499 antibody.

## Application Details

Application Notes:	WB: 0.06 µg/mL Optimal conditions should be determined by the investigator.
Comment:	ZNF499 Blocking Peptide, catalog no. 33R-8286, is also available for use as a blocking control in assays to test for specificity of this ZNF499 antibody
Restrictions:	For Research Use only

## Handling

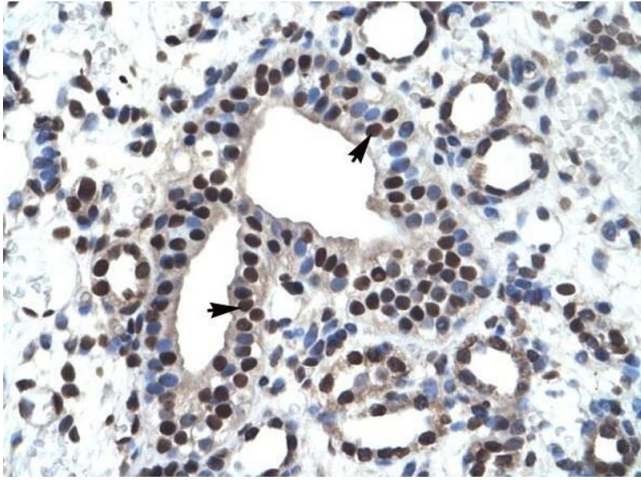
Format:	Lyophilized
Concentration:	Lot specific
Buffer:	Lyophilized powder. Add 50 µL of distilled water. Final antibody concentration is 1 mg/mL in PBS buffer.
Handling Advice:	Avoid repeated freeze/thaw cycles.
Storage:	4 °C/-20 °C
Storage Comment:	Store at 4 °C, following reconstitution, aliquot and store at -20 °C.

## Images



### Western Blotting

**Image 1.** Western Blot showing ZNF499 antibody used at a concentration of 1-2 µg/ml to detect its target protein.



### Immunohistochemistry

**Image 2.** ZNF499 antibody was used for immunohistochemistry at a concentration of 4-8 ug/ml to stain Epithelial cells of collecting tubule (arrows) in Human Kidney. Magnification is at 400X