

Datasheet for ABIN927303
anti-CCBP2 antibody (N-Term)



[Go to Product page](#)

2 Images

Overview

Quantity:	100 µL
Target:	CCBP2
Binding Specificity:	N-Term
Reactivity:	Human
Host:	Rabbit
Clonality:	Polyclonal
Conjugate:	This CCBP2 antibody is un-conjugated
Application:	Western Blotting (WB), Immunohistochemistry (IHC)

Product Details

Immunogen:	CCBP2 antibody was raised in rabbit using the N terminal of CCBP2 as the immunogen
Purification:	Purified

Target Details

Target:	CCBP2
Alternative Name:	CCBP2 (CCBP2 Products)
Background:	CCBP2 is a beta chemokine receptor, which is predicted to be a seven transmembrane protein similar to G protein-coupled receptors. Chemokines and their receptor-mediated signal transduction are critical for the recruitment of effector immune cells to the inflammation site. The expression of this receptor in lymphatic endothelial cells and overexpression in vascular tumors suggested its function in chemokine-driven recirculation of leukocytes and possible

Target Details

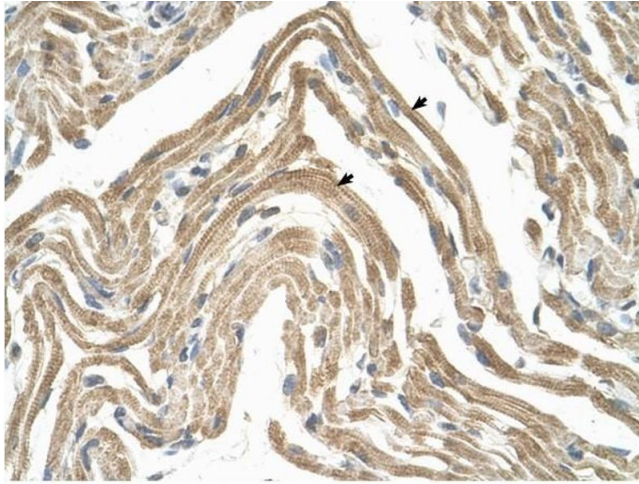
chemokine effects on the development and growth of vascular tumors. This receptor appears to bind the majority of beta-chemokine family members, however, its specific function remains unknown. Synonyms: Polyclonal CCBP2 antibody, Anti-CCBP2 antibody, chemokine binding protein 2 antibody, CCR10 antibody, CCR9 antibody, CMKBR9 antibody, D6 antibody, MGC126678 antibody, MGC138250 antibody, hD6 antibody.

Application Details

Application Notes:	WB: 0.2-1 µg/mL Optimal conditions should be determined by the investigator.
Comment:	CCBP2 Blocking Peptide, catalog no. 33R-5612, is also available for use as a blocking control in assays to test for specificity of this CCBP2 antibody
Restrictions:	For Research Use only

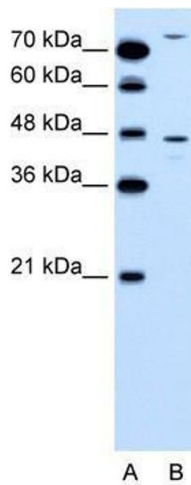
Handling

Format:	Lyophilized
Concentration:	Lot specific
Buffer:	Lyophilized powder. Add 50 µL of distilled water. Final antibody concentration is 1 mg/mL in PBS buffer.
Handling Advice:	Avoid repeated freeze/thaw cycles.
Storage:	4 °C/-20 °C
Storage Comment:	Store at 4 °C, following reconstitution, aliquot and store at -20 °C.



Immunohistochemistry

Image 1. CCBP2 antibody was used for immunohistochemistry at a concentration of 4-8 ug/ml to stain Skeletal muscle cells (arrows) in Human Muscle. Magnification is at 400X



Western Blotting

Image 2. CCBP2 antibody used at 2.5 ug/ml to detect target protein.