

Datasheet for ABIN927304  
**anti-CCL16 antibody (N-Term)**



[Go to Product page](#)

1 Image

## Overview

Quantity:	100 µL
Target:	CCL16
Binding Specificity:	N-Term
Reactivity:	Human
Host:	Rabbit
Clonality:	Polyclonal
Conjugate:	This CCL16 antibody is un-conjugated
Application:	Western Blotting (WB)

## Product Details

Immunogen:	CCL16 antibody was raised in rabbit using the N terminal of CCL16 as the immunogen
Purification:	Purified

## Target Details

Target:	CCL16
Alternative Name:	CCL16 ( <a href="#">CCL16 Products</a> )
Background:	<p>CCL16 gene is one of several cytokine genes clustered on the q-arm of chromosome 17. Cytokines are a family of secreted proteins involved in immunoregulatory and inflammatory processes. The CC cytokines are proteins characterized by two adjacent cysteines. CCL16 displays chemotactic activity for lymphocytes and monocytes but not for neutrophils. This cytokine also shows a potent myelosuppressive activity and suppresses proliferation of</p>

## Target Details

myeloid progenitor cells. The expression of this gene is upregulated by IL-10. Synonyms: Polyclonal CCL16 antibody, Anti-CCL16 antibody, chemokine, C-C motif ligand 16 antibody, CKb12 antibody, HCC-4 antibody, ILINCK antibody, LCC-1 antibody, LEC antibody, LMC antibody, MGC117051 antibody, Mtn-1 antibody, NCC-4 antibody, NCC4 antibody, SCYA16 antibody, SCYL4 antibody.

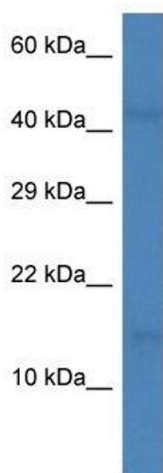
## Application Details

Application Notes:	Optimal conditions should be determined by the investigator.
Comment:	CCL16 Blocking Peptide, catalog no. 33R-8609, is also available for use as a blocking control in assays to test for specificity of this CCL16 antibody
Restrictions:	For Research Use only

## Handling

Format:	Lyophilized
Concentration:	Lot specific
Buffer:	Lyophilized powder. Add 50 $\mu$ L of distilled water. Final antibody concentration is 1 mg/mL in PBS buffer.
Handling Advice:	Avoid repeated freeze/thaw cycles.
Storage:	4 °C/-20 °C
Storage Comment:	Store at 4 °C, following reconstitution, aliquot and store at -20 °C.

## Images



### Western Blotting

**Image 1.** Western Blot showing CCL16 antibody used at a concentration of 1.0 ug/ml against 721\_B Cell Lysate