

Datasheet for ABIN927315 **anti-STAT6 antibody (C-Term)**

3 Images



[Go to Product page](#)

Overview

Quantity:	100 µL
Target:	STAT6
Binding Specificity:	C-Term
Reactivity:	Human, Mouse, Rat, Dog, Pig
Host:	Rabbit
Clonality:	Polyclonal
Conjugate:	This STAT6 antibody is un-conjugated
Application:	Western Blotting (WB)

Product Details

Immunogen:	STAT6 antibody was raised in rabbit using the C terminal of STAT6 as the immunogen
Cross-Reactivity:	Mouse (Murine), Rat (Rattus), Dog (Canine), Pig (Porcine)
Purification:	Purified

Target Details

Target:	STAT6
Alternative Name:	STAT6 (STAT6 Products)
Background:	Full-length human STAR6 (NP_003144) was expressed in E.coli as inclusion body and purified after protein refolding for mouse immunization. Clone 5B1 shows excellent western blot detection of endogenous STAT6 using ACHN cell lysate. The protein encoded by this gene is a member of the STAT family of transcription factors. In response to cytokines and growth

Target Details

factors, STAT family members are phosphorylated by the receptor associated kinases, and then form homo- or heterodimers that translocate to the cell nucleus where they act as transcription activators. Synonyms: Polyclonal STAT6 antibody, Anti-STAT6 antibody, signal transducer and activator of transcription 6, interleukin-4 induced antibody, D12S1644 antibody, IL-4-STAT antibody, STAT6B antibody, STAT6C antibody.

Pathways: [JAK-STAT Signaling](#), [Regulation of Leukocyte Mediated Immunity](#), [Positive Regulation of Immune Effector Process](#), [Production of Molecular Mediator of Immune Response](#)

Application Details

Application Notes: Optimal conditions should be determined by the investigator.

Comment: STAT6 Blocking Peptide, catalog no. 33R-6788, is also available for use as a blocking control in assays to test for specificity of this STAT6 antibody

Restrictions: For Research Use only

Handling

Format: Lyophilized

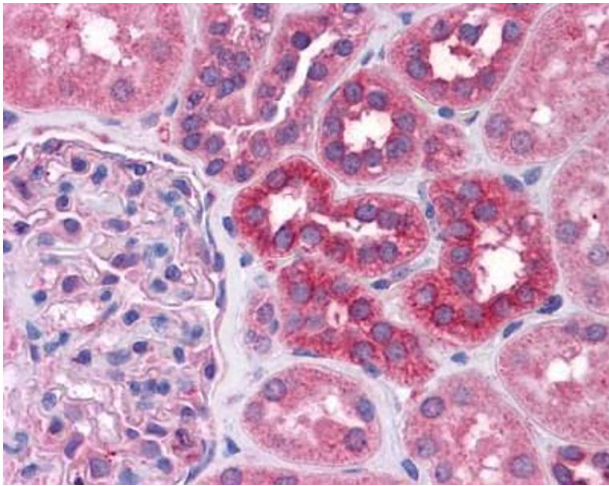
Concentration: Lot specific

Buffer: Lyophilized powder. Add 50 μ L of distilled water. Final antibody concentration is 1 mg/mL in PBS buffer.

Handling Advice: Avoid repeated freeze/thaw cycles.

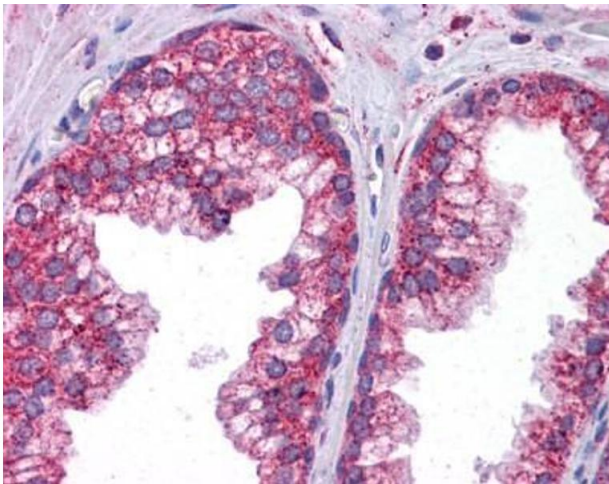
Storage: 4 °C/-20 °C

Storage Comment: Store at 4 °C, following reconstitution, aliquot and store at -20 °C.



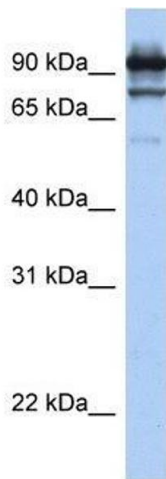
Immunohistochemistry

Image 1. STAT6 antibody was used for immunohistochemistry at a concentration of 4-8 ug/ml. Magnification is at 400X



Immunohistochemistry

Image 2. STAT6 antibody was used for immunohistochemistry at a concentration of 4-8 ug/ml. Magnification is at 400X



Western Blotting

Image 3. Western Blot showing STAT6 antibody used at a concentration of 1.0 ug/ml against Hela Cell Lysate