

## Datasheet for ABIN927322 **anti-RBM6 antibody (N-Term)**



[Go to Product page](#)

### 1 Image

#### Overview

Quantity:	100 µL
Target:	RBM6
Binding Specificity:	N-Term
Reactivity:	Human, Mouse, Rat, Cow, Dog
Host:	Rabbit
Clonality:	Polyclonal
Conjugate:	This RBM6 antibody is un-conjugated
Application:	Western Blotting (WB)

#### Product Details

Immunogen:	RBM6 antibody was raised in rabbit using the N terminal of RBM6 as the immunogen
Cross-Reactivity:	Mouse (Murine), Rat (Rattus), Cow (Bovine), Dog (Canine)
Purification:	Purified

#### Target Details

Target:	RBM6
Alternative Name:	RBM6 ( <a href="#">RBM6 Products</a> )
Background:	RBM6 contains 1 G-patch domain and 1 RRM (RNA recognition motif) domain. It specifically binds poly(G) RNA homopolymers in vitro. Synonyms: Polyclonal RBM6 antibody, Anti-RBM6 antibody, RNA binding motif protein 6 antibody, 3G2 antibody, DEF-3 antibody, DEF3 antibody, DKFZp686B0877 antibody, FLJ36517 antibody, HLC-11 antibody, NY-LU-12 antibody, g16

## Target Details

---

antibody.

## Application Details

---

Application Notes:	WB: 0.2-1 µg/mL Optimal conditions should be determined by the investigator.
Comment:	RBM6 Blocking Peptide, catalog no. 33R-8083, is also available for use as a blocking control in assays to test for specificity of this RBM6 antibody
Restrictions:	For Research Use only

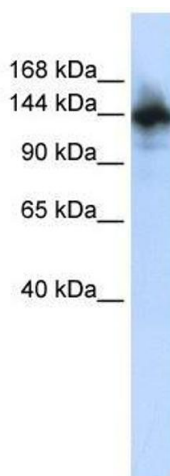
## Handling

---

Format:	Lyophilized
Concentration:	Lot specific
Buffer:	Lyophilized powder. Add 50 µL of distilled water. Final antibody concentration is 1 mg/mL in PBS buffer.
Handling Advice:	Avoid repeated freeze/thaw cycles.
Storage:	4 °C/-20 °C
Storage Comment:	Store at 4 °C, following reconstitution, aliquot and store at -20 °C.

## Images

---



### Western Blotting

**Image 1.** RBM6 antibody used at 2.5 ug/ml to detect target protein.